

Unity in Diversity

To honour the Indigenous community in the built environment our exterior expression is inspired by the role of Wampum belts in storytelling, artistry and craft, and as an embodiment of strength in unity. This wrapping of the glass curtain and shimmering mesh along the north-west faces of the STLC and new bridge and interlacing the facade materials into a cohesive expression celebrate the detailing and tensile strength of a well-crafted Wampum belt. These beaded and woven belts have been used as visual memory keepers with patterns signifying an event, an invitation, shared values and/or an agreement between two or more parties. It is the symbolism of unity and creation that resonated with the aspirations of the STLC as a place that brings people together to engage with live storytelling through performance.

Exterior Operable Shading System at West Facade

Multicolour Heavy Blackout Curtains

Interior Wood Fins

High Performance Glazing with Custom Frit

Facade Detail

One Line

Facade Concept

Transparence

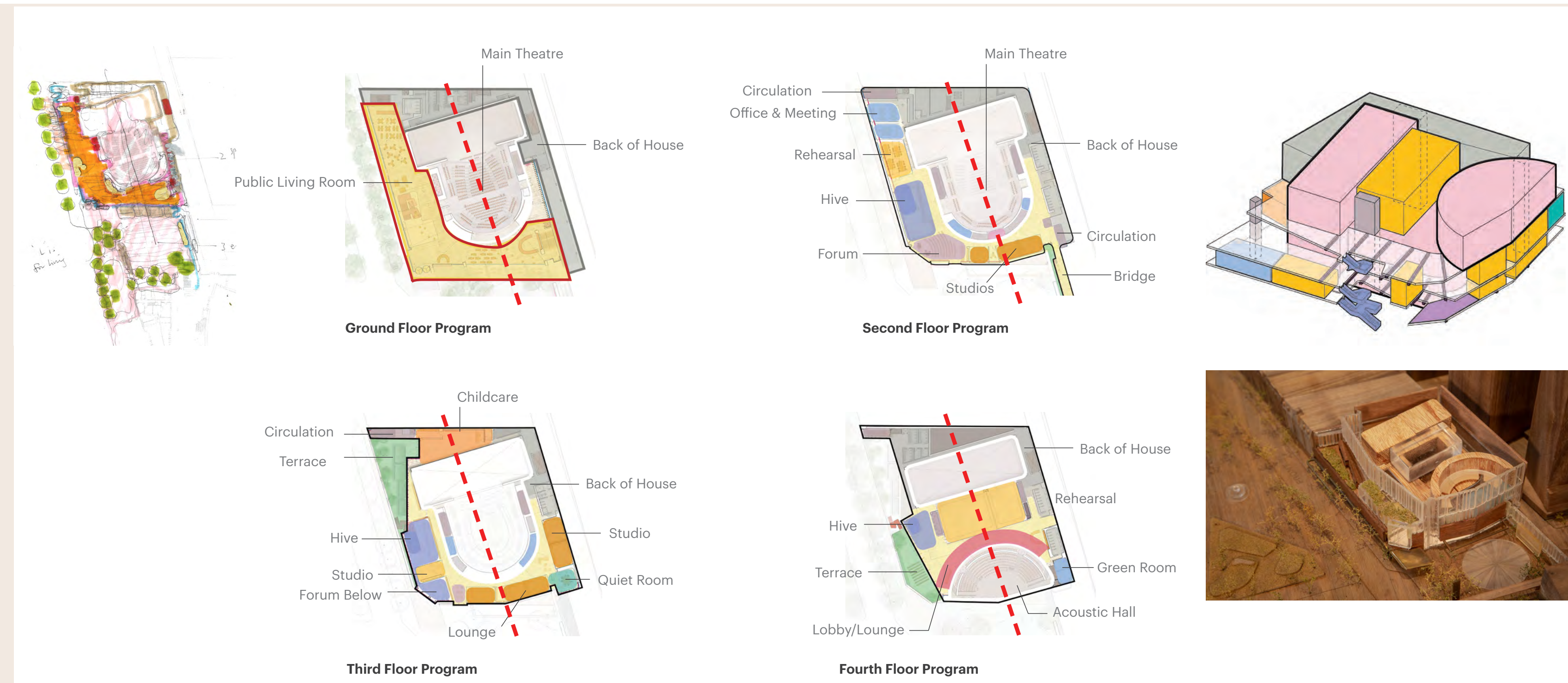
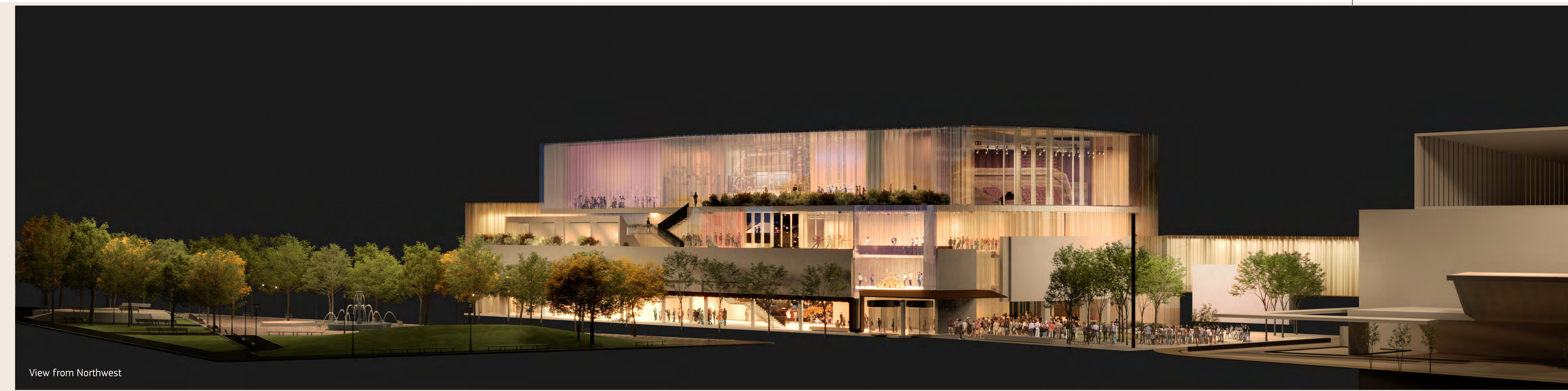
*"Transparence is the highest most liberating value in art...
Transparence means experiencing the luminousness of the thing in itself, of things being what they are"*
-Susan Sontag



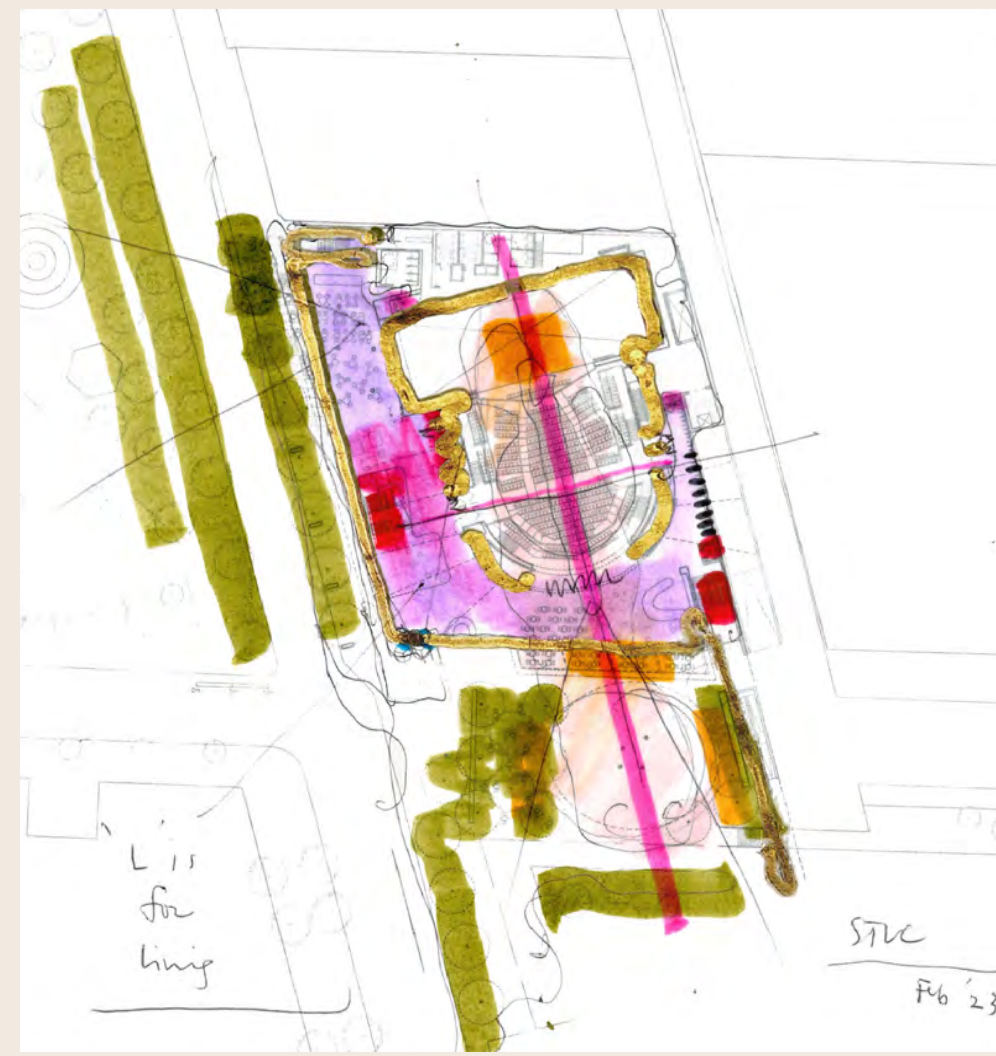
STLC NEXT is a place for community and the arts to thrive—both necessary ingredients for the enrichment of humanity. Having served the community well for the past 50 years, in its next chapter the St. Lawrence Centre for the Arts rises strongly from its honoured heritage foundation with a transformative organizational approach to propel it into the next 50 years.

It is reimagined as an attractive, inviting living room and urban condenser where diversity, equity, and inclusion are prioritized to nurture belonging andw authenticity for maximum creative expression. Supported by the unified approach to the built and natural environments, the diversity and vivacity of the performing arts—from its myriad styles to its creators, supporters and audiences—emanate from within the revitalized STLC to the historic neighbourhood, multicultural city, and interconnected world beyond.

Envisioned as an embrace of culture, a high-performance transparent façade wraps the existing structure along the north (Front St. East) and west (Scott St. Plaza) to include the new bridge. Like a dynamic and shimmering curtain—a prelude to the performances taking place within—glazing grabs the north light and vertical frit emphasizes the curtain-like texture along with a shading structure of shimmering mesh that modulates the west façade. Its transparency also affords porosity with views inside of wood vertical fins (providing light control and an inviting atmosphere), playful pops of colour in STLC NEXT's palette (to accentuate the diversity of people, program, and place), and the lively activities taking place. Woven together, the multi-layered façade system joins these exterior faces while adding a sense of lightness to counterbalance the heritage concrete.



St. Lawrence Centre
for the Arts
HARIRI PONTARINI
ARCHITECTS
HPA + LMN + Smoke + Tawaw + SLA



Radical Openness

The Embrace from Park to Plaza

The ground floor experience is about life. End-to-end user flow and visual connection to nature through its park-to-plaza reach. In this new Arts District, a clearly defined entrance canopy takes pride of place at the corner at Front and Scott to welcome and draw people into the STLC. Visitors are greeted by the warm and informal atmosphere of a wood-clad, triple-height lobby with views up to activated spaces above. Here, the radial ceiling element beams out from the Main Theatre through the lobby and the central stair acts

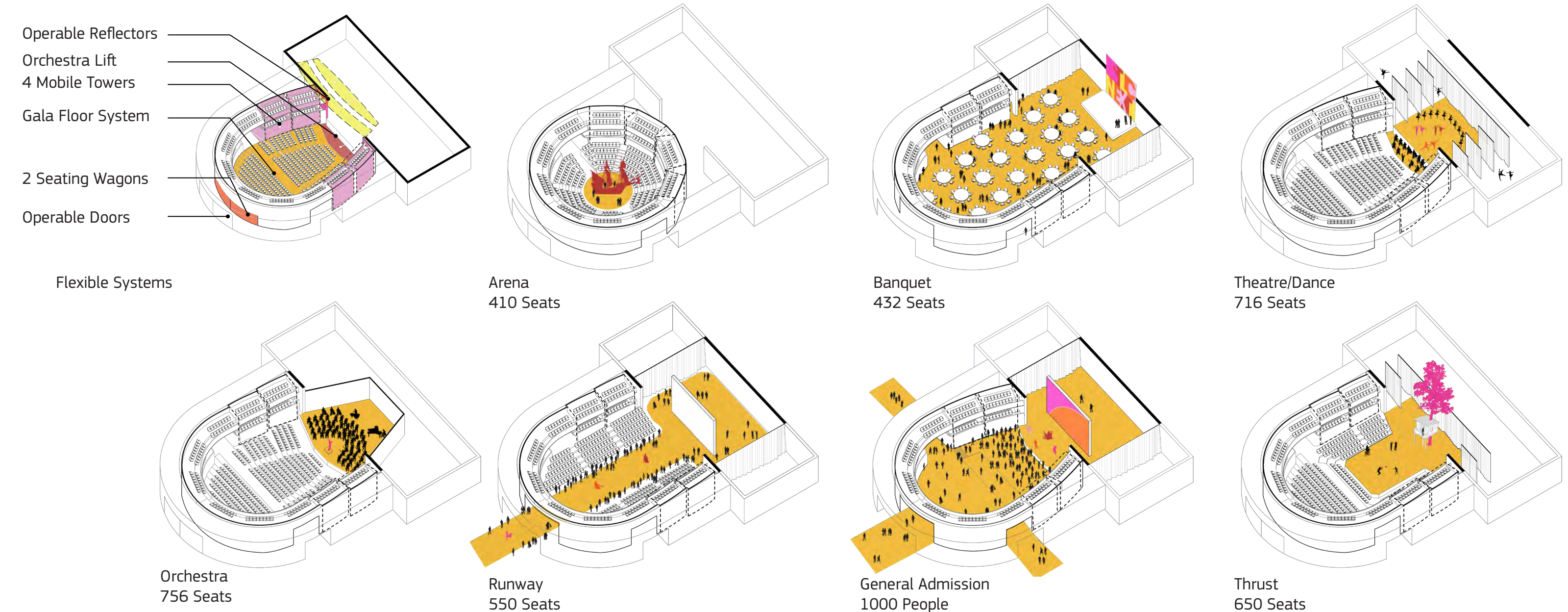
as a vertical connector—a conceptual and organizational Tree of Life that is rooted in the community and ground floor experience, draws its energy up, and reaches out like branches through the building and to the plaza. The ground floor's L-shaped public-facing area has a strong, transparent relationship to both Front and Scott streets, with large operable doors opening to allow performances and the lobby's café culture to flow out to the new plaza. It is the unique reorientation of the theatre that allows the interior public and performance spaces to align with and seamlessly spill out onto Scott St.

Porosity



Flexibility

Accessed by the ground floor and second level, the 650 to 1000-seat Main Theatre is a highly flexible venue that expands the production capabilities beyond the traditional stage. It can adapt itself and function well in a variety of formats to suit performance styles—a proscenium with a very large stage-house, a pit, trap room, and concert shell, as well as thrust, in-the-round, and flat floor arrangements. While acoustically separated from the lobby most of the time, the theatre's large doors can be opened to create an emphatic connection between the performance space, lobby and plaza. This brings to life an imaginary skateboarder cruising from Berczy Park, into the lobby, through



Emanation

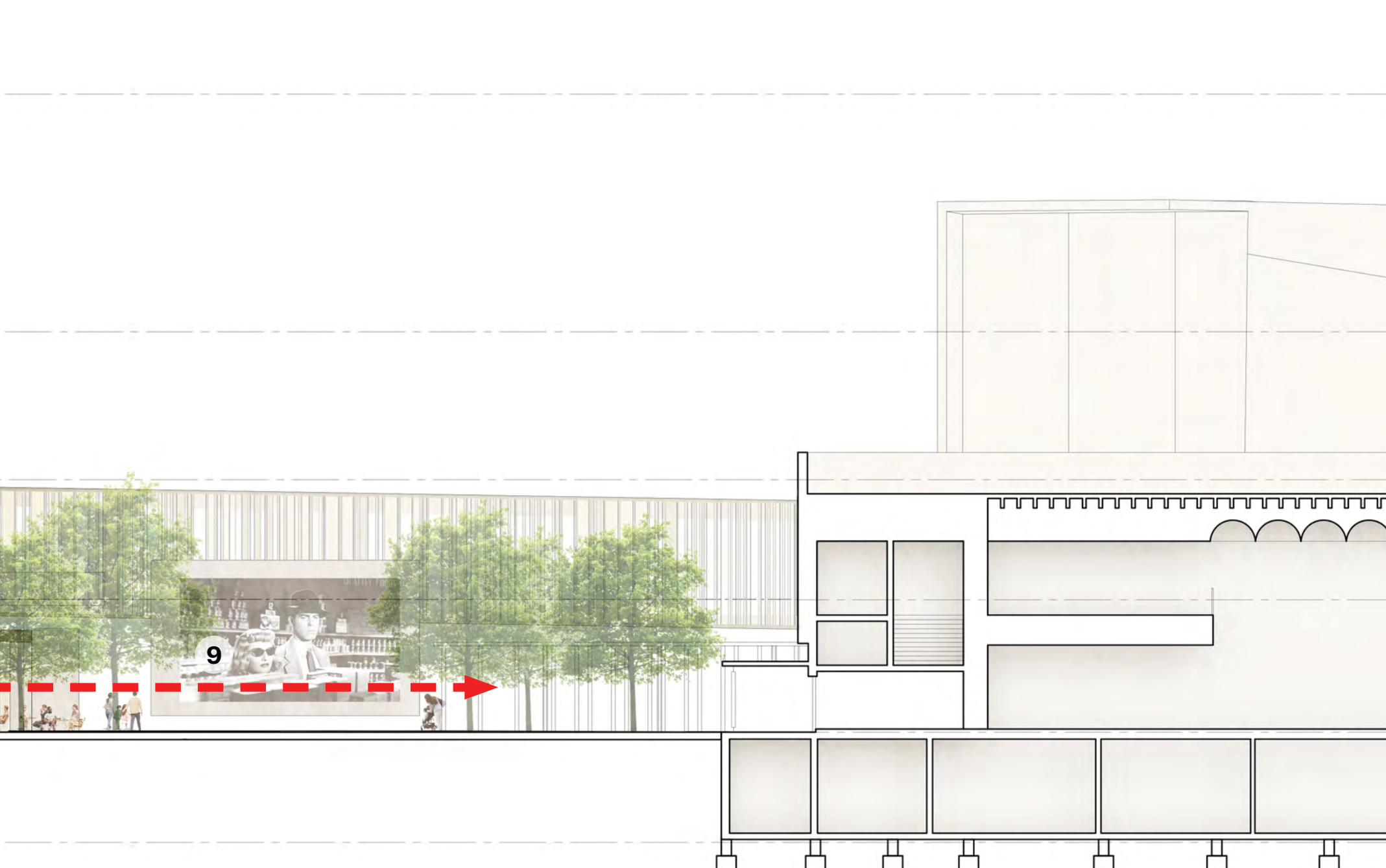
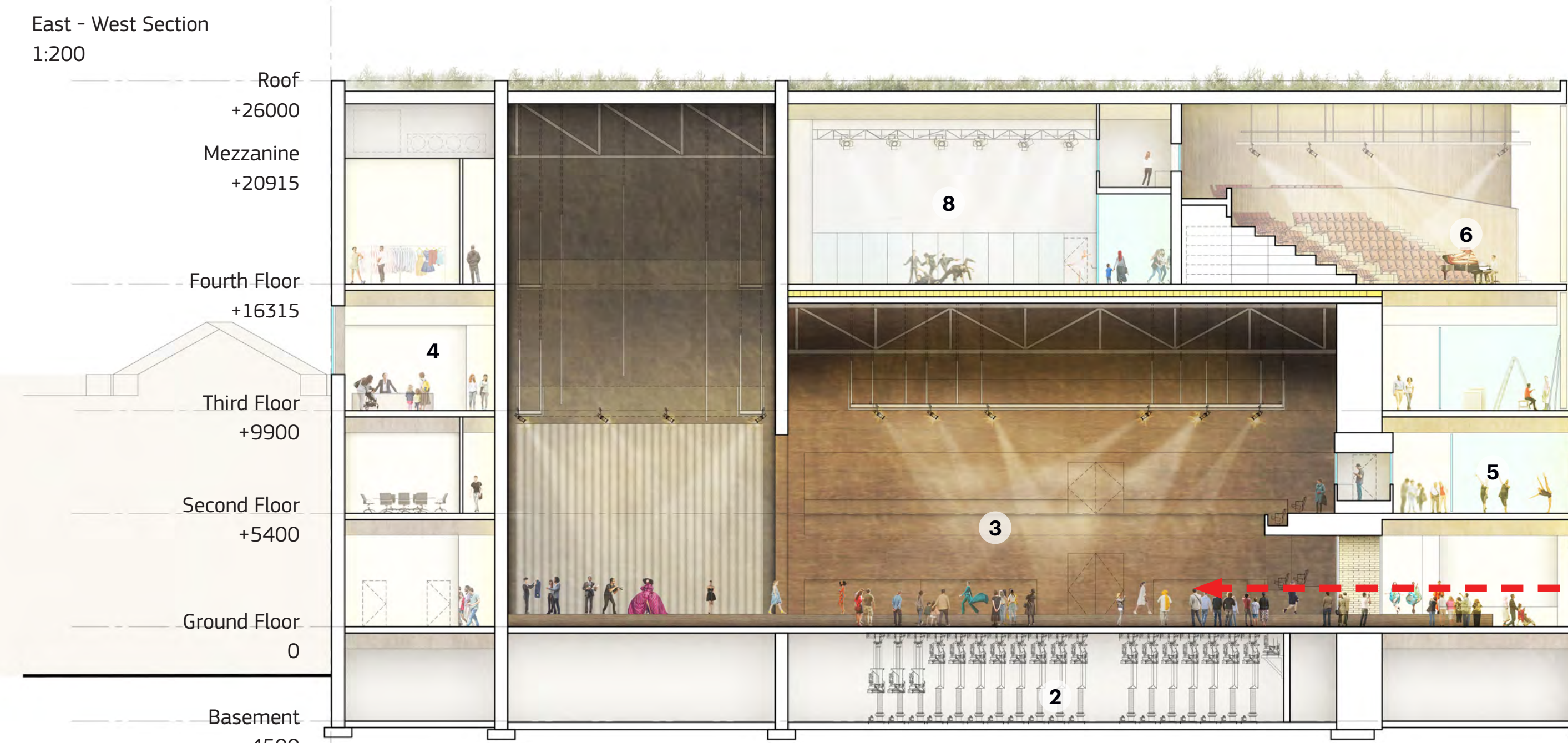
Radial Energy... Reach...



The theatre is the heart and centre of the project. Using a radial geometry, the energy and reach of program and structure radiates both symbolically and physically in all directions. The structure is designed to extend out from the concrete drum of the theatre and touches lightly against the perimeter "veil", allowing for maximum flexi-

The City's Living Room

As the community's living room, the L-shaped plan is for living, grabbing the whole site from the north-east to the south-west. It is open, transparent, accessible, inviting and activated.



St. Lawrence Centre
for the Arts
HARIRI PONTARINI
ARCHITECTS

HPA + LMN + Smoke + Tawaw + SLA

A Cultural Ecosystem

An East-West Spine as Connector

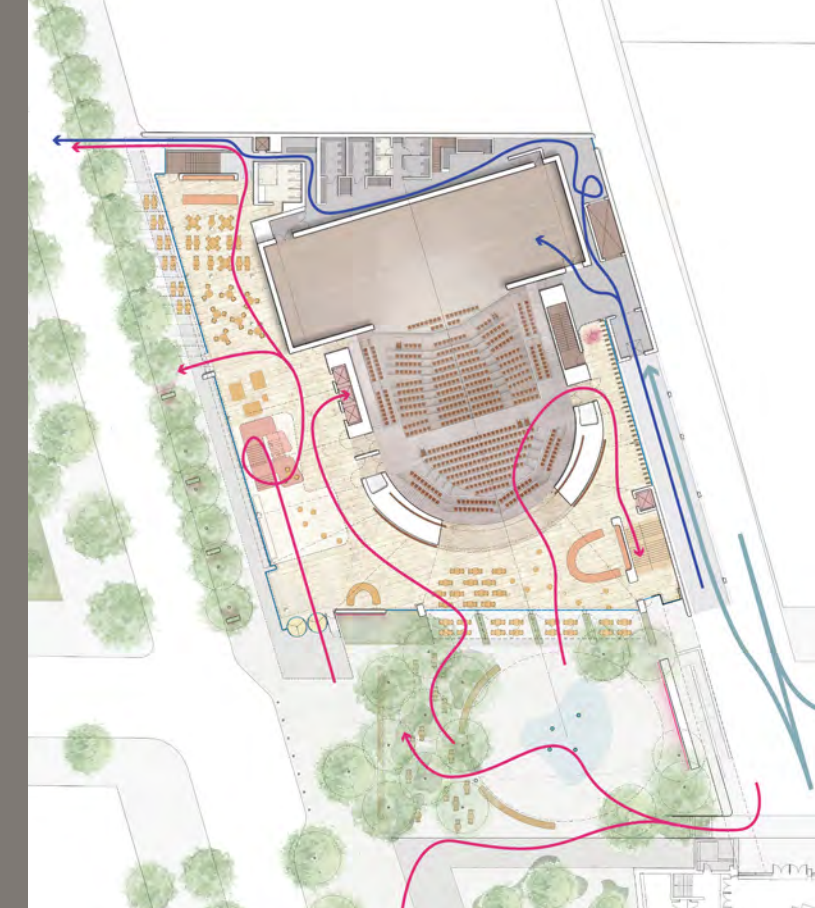
To fully realize the potential of the new plaza and the ambitions of the STLC as a community hub, our team has taken cues from the rebellious spirit of the original structure and boldly turns the axis of the Main Theatre to face Scott St. First, this sets up a strong, anchoring spine that serves as an organizational tool for flow and program on the ground floor and throughout the entire building. Second, this supports the cultural program of the building with flexible and performative outdoor spaces. It is envisioned that the energy of the performances from the main theatre radiates out to the lobby and through the building, as well as spills out to the plaza and the city.



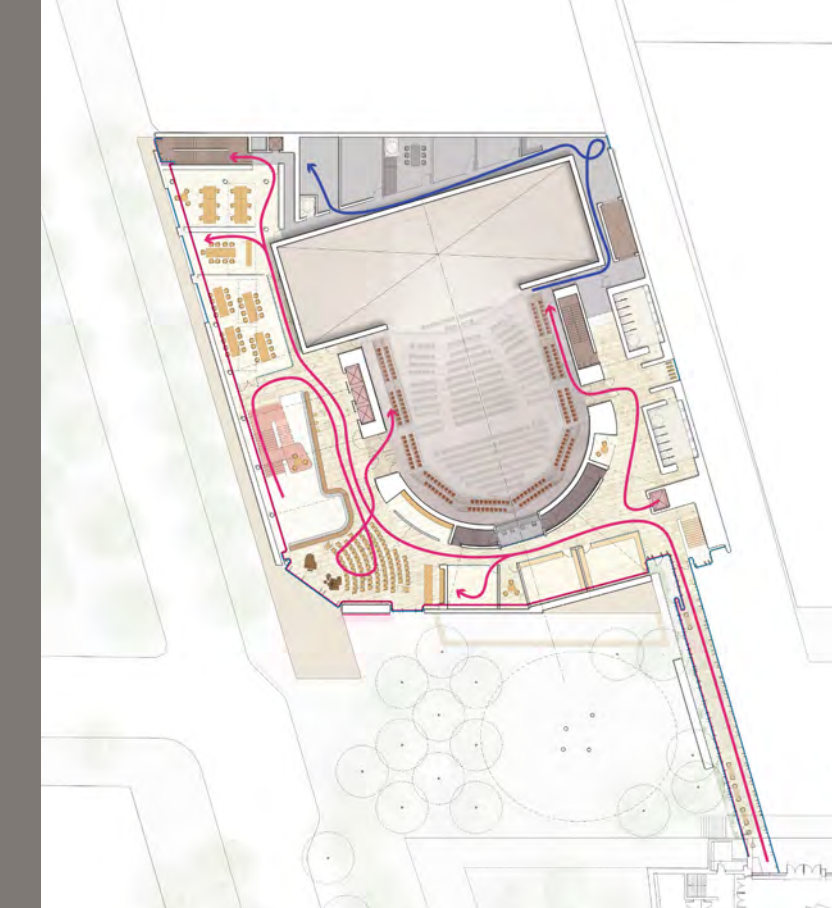
Flow



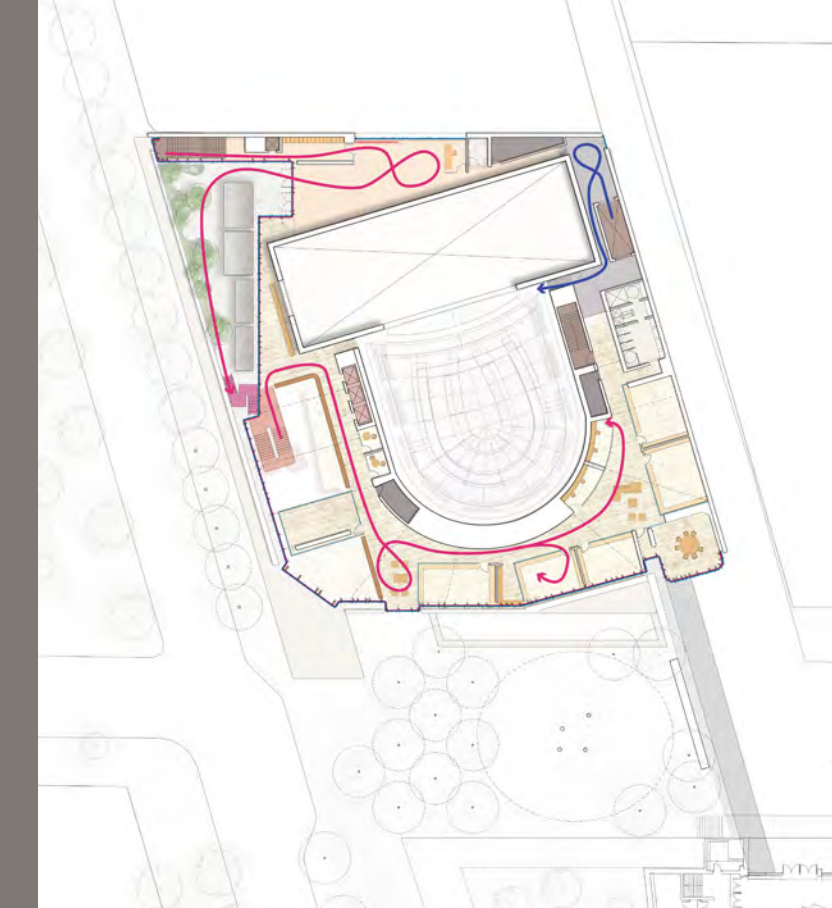
Ground Floor Flow Diagram



Second Floor Flow Diagram



Third Floor Flow Diagram



Fourth Floor Flow Diagram



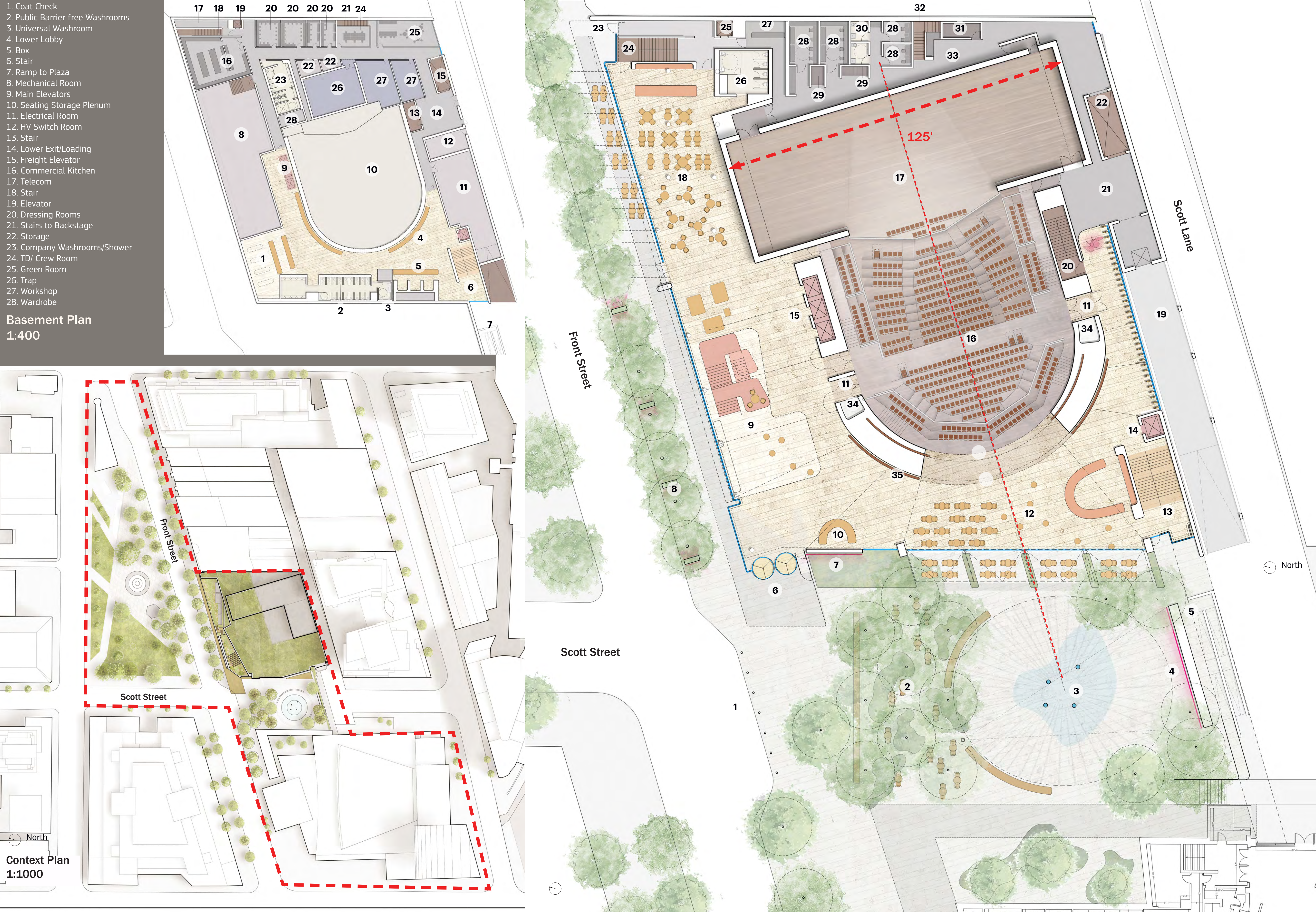
Third Floor Terrace



Large Rehearsal Hall

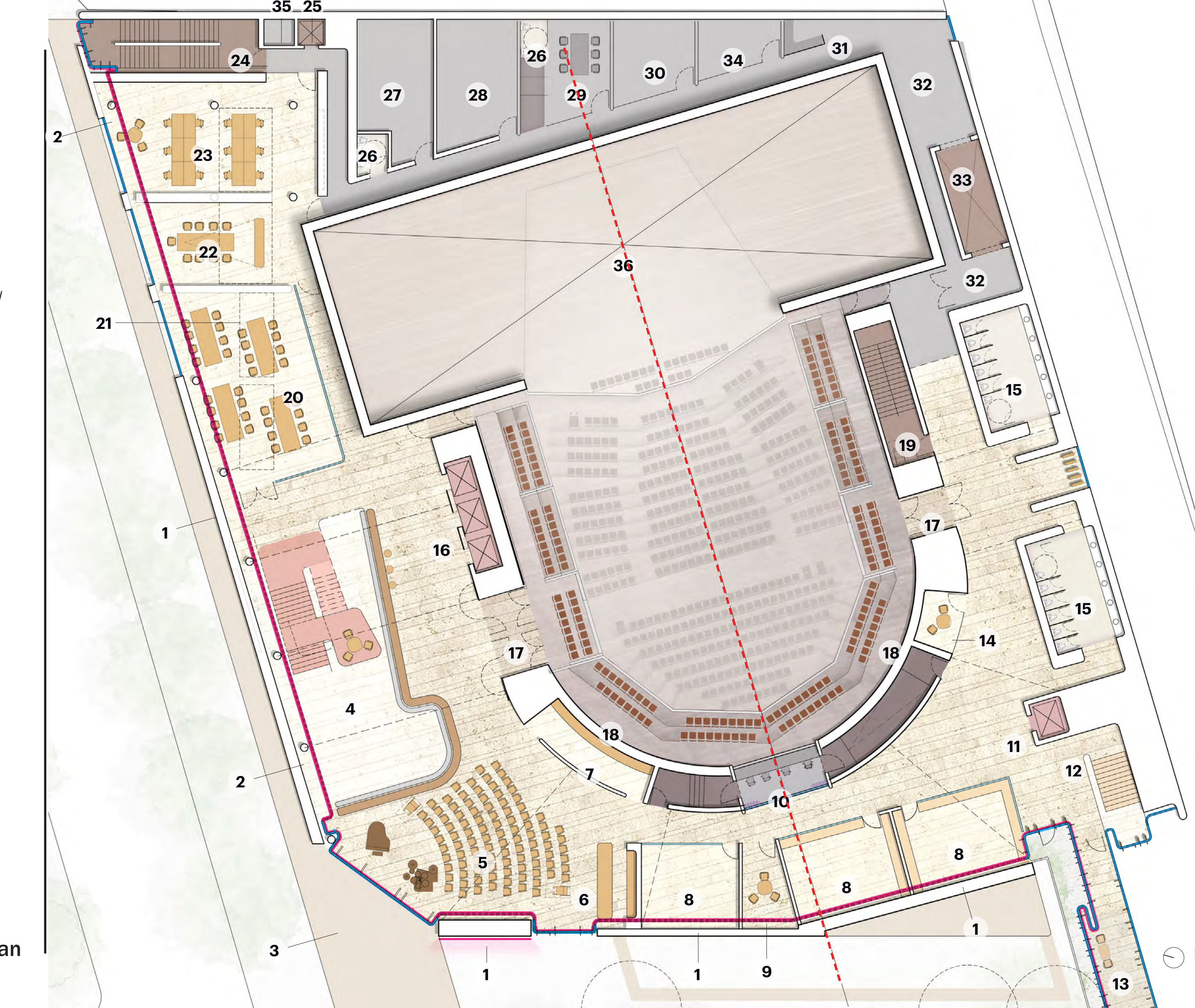


Fourth Floor Lobby and Terrace

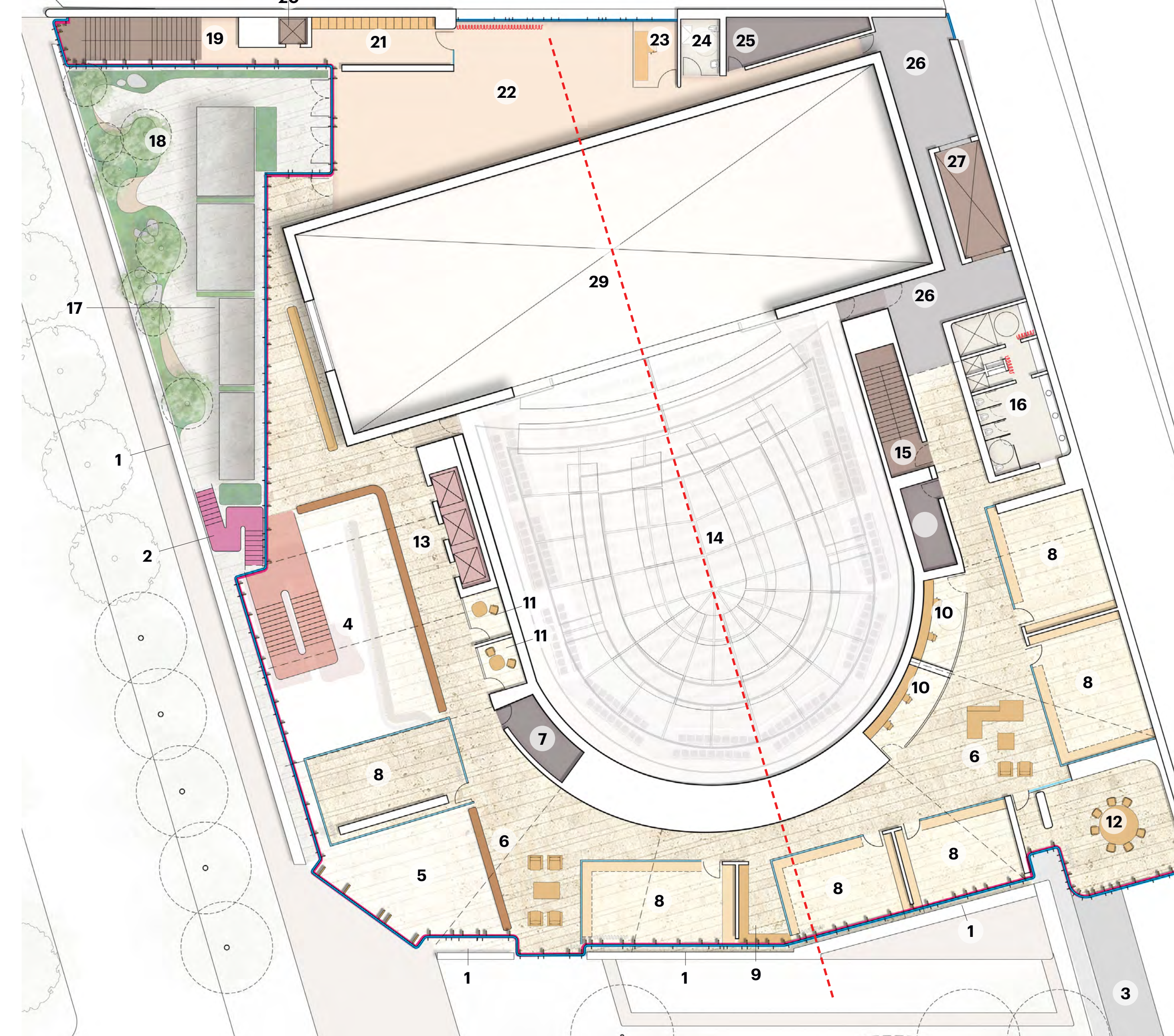


- Landscape**
1. Lay-By
 2. Park
 3. Exterior Performance Area
 4. Projections Wall
 5. Ramp Down to Scott St.
 6. Main Entrance
 7. Playball Screen
 8. Digital Posters
- Public Space**
9. Hive & Feature Stair
 10. Welcome Desk
 11. Sound Light Lock
 12. Cafe / Lounge
 13. Stair - Down to Washrooms / Up To Bridge
 14. Elevator to Washrooms / Bridge
 15. Main Elevators
 16. Audience Chamber
 17. Main Theatre Stage Platform
 18. Lounge / Bar
- Back of House**
19. Loading Ramp/Dock
 20. Exit Stair
 21. Temporary Holding Area
 22. Freight Lift
 23. Stage Door
 24. Stair
 25. BOH Elevator
 26. Public Gender Neutral Washrooms
 27. Stage Door Security
 28. Dressing Rooms
 29. Quick Change Area
 30. Performer Washrooms
 31. Office
 32. Stair - Down to Dressing Rooms And Workshops
 33. Stage Surround Corridor
 34. Mobility Device Structure
 35. Large Acoustic Sliding Doors

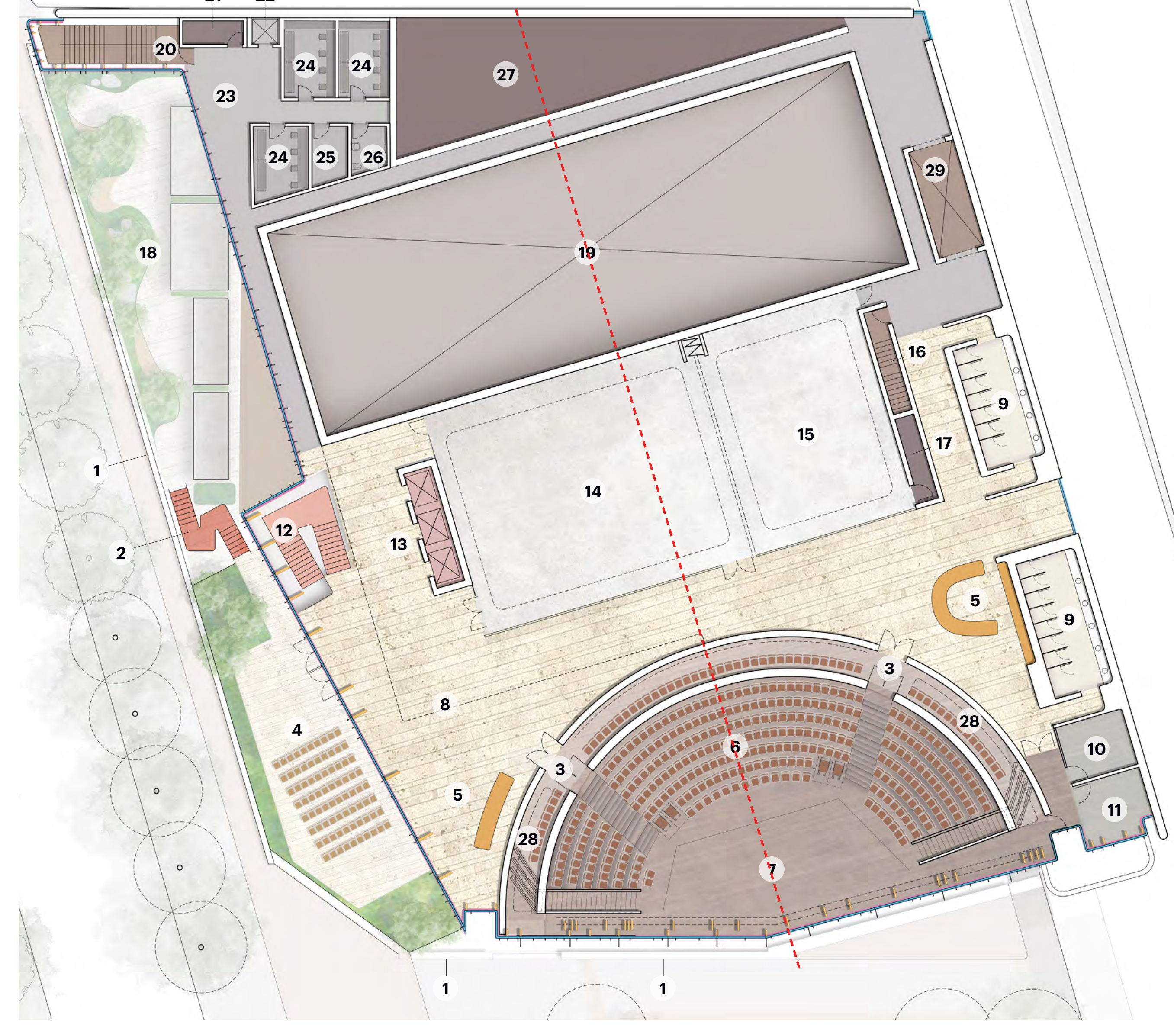
Ground Floor / Site Plan 1:200



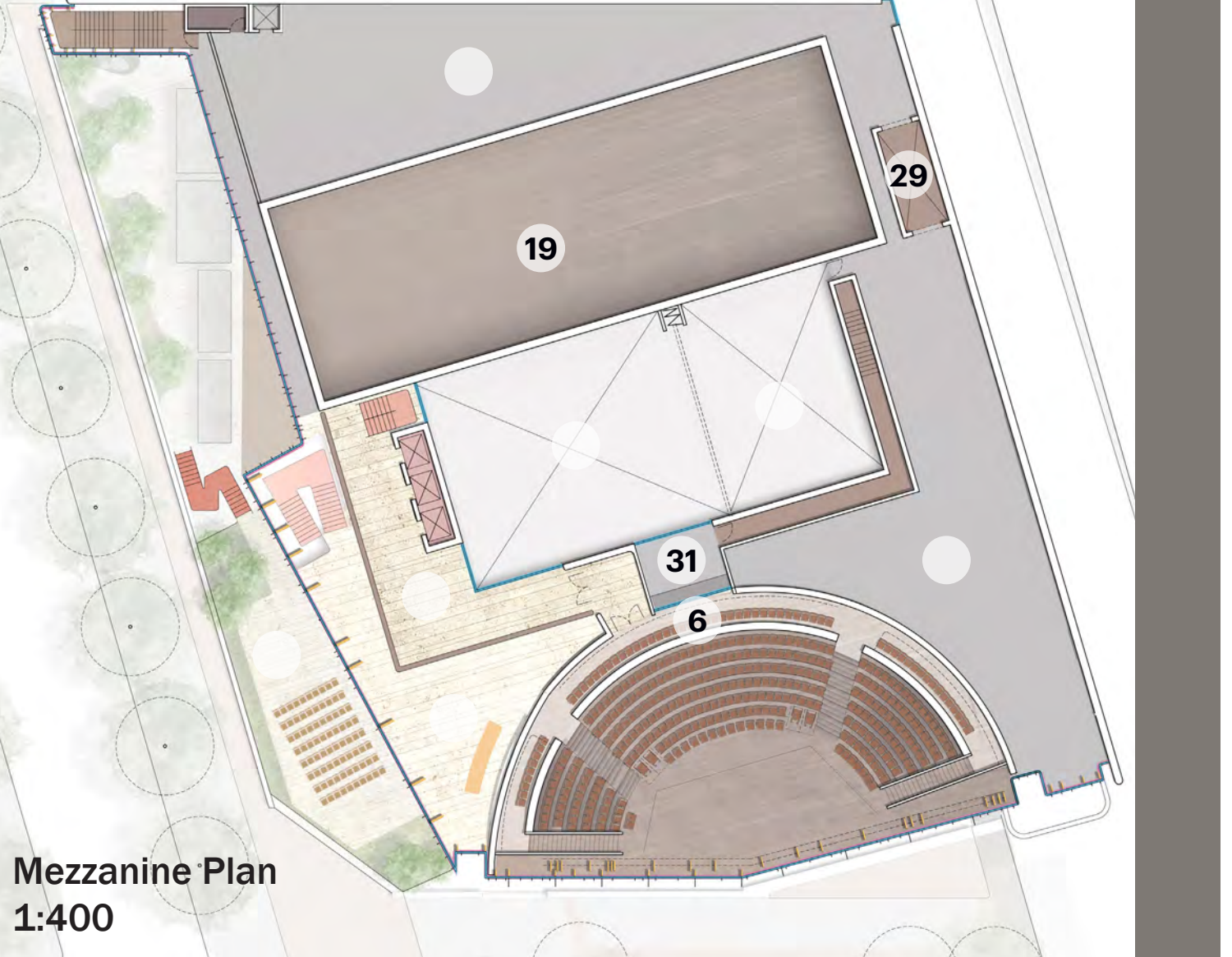
Second Floor Plan 1:200



Third Floor Plan 1:200



Fourth Floor Plan 1:200



Mezzanine Plan 1:400

A Great Terrace

The fourth floor lobby and acoustic hall open up to a large terrace. With panoramic views of Berzky Park and downtown, the terrace is a space for performance, receptions and daily respite and enjoyment for users of the building. It playfully connects to the third floor terrace below via exterior stair allowing activities to spill between floors. Colourful and resilient planting connects the terrace to the streetscape and park below.

A New Arts District

The closing of Scott St. is seen as a significant urban gesture and immense opportunity to create a unique Arts District in Toronto. The building and landscape strategies work in unison to connect neighbourhood assets and create an accessible social heart in the city for its diverse users. A park-to-plaza approach extends the green character of Berzky Park across Front St. East and continues along a diagonal axis to inhabit the lush pocket space of the new Scott St. Plaza. By extending the street-level experience with a four-season landscape strategy, these key parts of the public realm are combined to strengthen the neighbourhood's identity and signify the arrival at a vibrant Arts District in the city.



Trees and plantings of perennials and deciduous species shelter the space from the traffic of Front St. and provide daily accessible neighbourhood amenity. A large circular open space articulated by paving patterns allows for informal and scheduled gatherings, performances and celebrations, and is otherwise activated by seating and a shallow water feature with lyrical jets for daily enjoyment.



Acoustic Hall



Acoustic Hall



Acoustic Hall in the Sky

At the building's pinnacle, the fourth floor prioritizes performance, events and magnificent views. Its community jewel is the 300-seat Acoustic Hall designed for unamplified music and performance. This hall is oriented to the building's main axis facing west to overlook Scott St. Plaza, affording patrons with views towards the CN Tower and downtown, and wrapped in the glass curtain façade. Telescopic seating allows for flat floor configurations. Large and medium rehearsal rooms can be adapted to multiple configurations, which can connect with an operable partition when desired. Private and public events—from weddings, fashion shows, and banquets to receptions, etc.—can occur simultaneously or extend to the light-filled upper lobby and rooftop terrace for a singular event, offering coveted views

St. Lawrence Centre
for the Arts
HARRI PONTARINI
ARCHITECTS
HPA + LMN + Smoke + Tawaw + SLA