

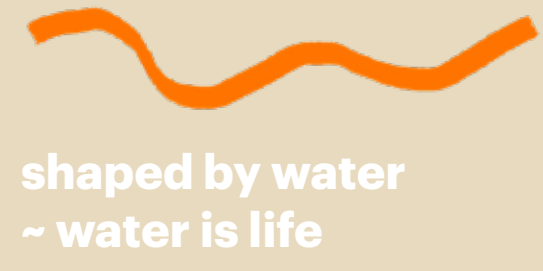


above front & scott street looking southeast

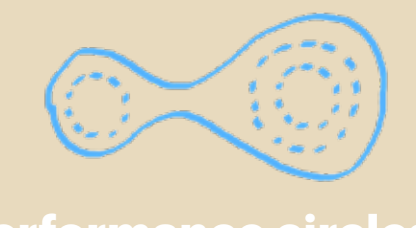
# Mookibii ~ shaped by water

St. Lawrence Centre for the Performing Arts

design through indigenous ways of knowing



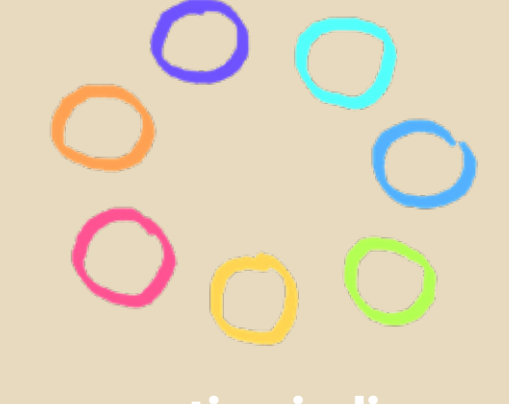
shaped by water  
- water is life



performance circles  
- powwow is performance tradition



celebrate interconnectedness  
- the building is alive



supporting indigenous identity  
- heritage of clan identities

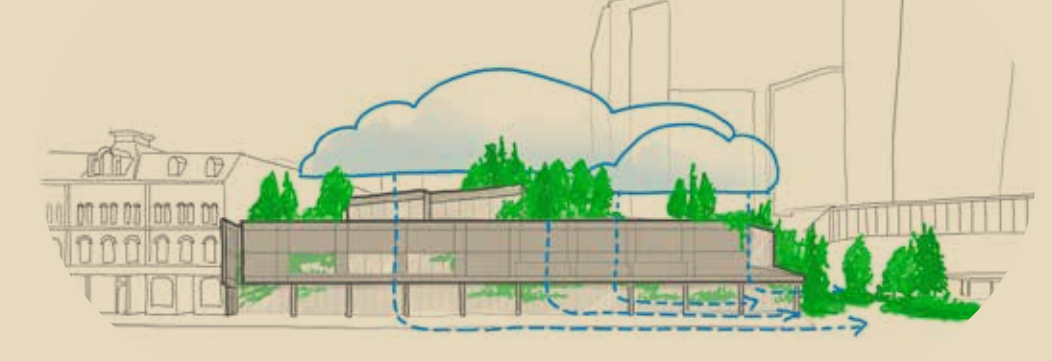


art flows through  
- creation process



radically inclusive performance  
- dissolve boundaries

integrated public art



clouds are water connected to sky

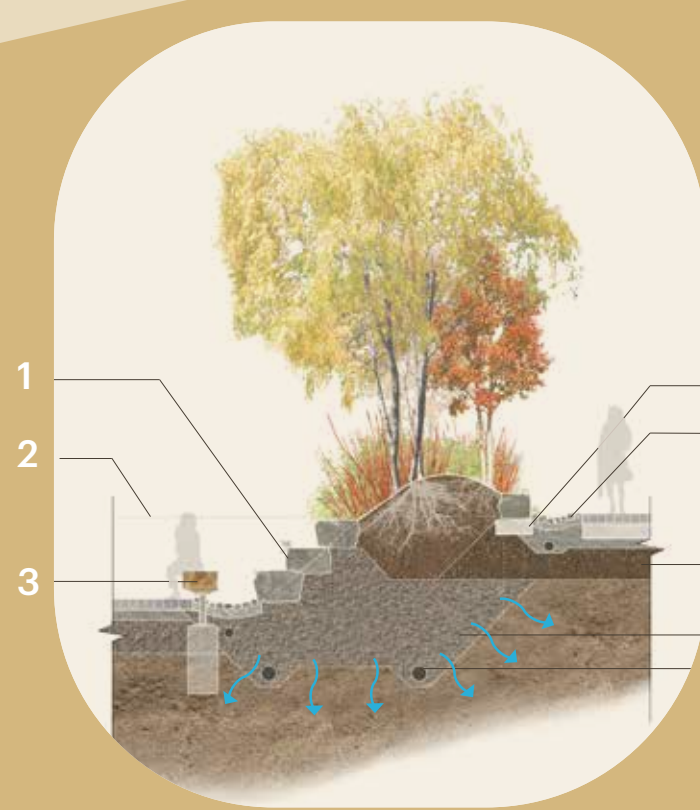


above scott street plaza - farmers' market mode

"the building is alive"

landscape mound sections legend

- 1. ledge stone
- 2. existing grade
- 3. timber bench
- 4. pile supported grade beam
- 5. paver stone swale
- 6. structural soil
- 7. gravel storage
- 8. overflow conveyance
- 9. glacial erratic boulders
- 10. riverstone swale



scott street plaza - food truck & informal performance mode





front & scott street looking southeast



St. Lawrence Centre for the Arts is a place of life, and we look to water in all its forms for inspiration.

The Anishinaabemowin word for water is nibi: I am coming toward you. Water seeks out life to nurture it; riparian ecosystems border the soft, living edges of water with the greatest diversity and activity. STLC sits on the former shoreline edge of Lake Ontario, alongside an already vibrant cultural ecosystem that forms the core of Toronto's identity.

Inside, an identifiable and unifying shoreline element is a living border around the formal performance spaces. Alongside this internal shoreline, areas for gathering surround the performance hall like pebbles and eddies, adding places of interest and activity throughout.

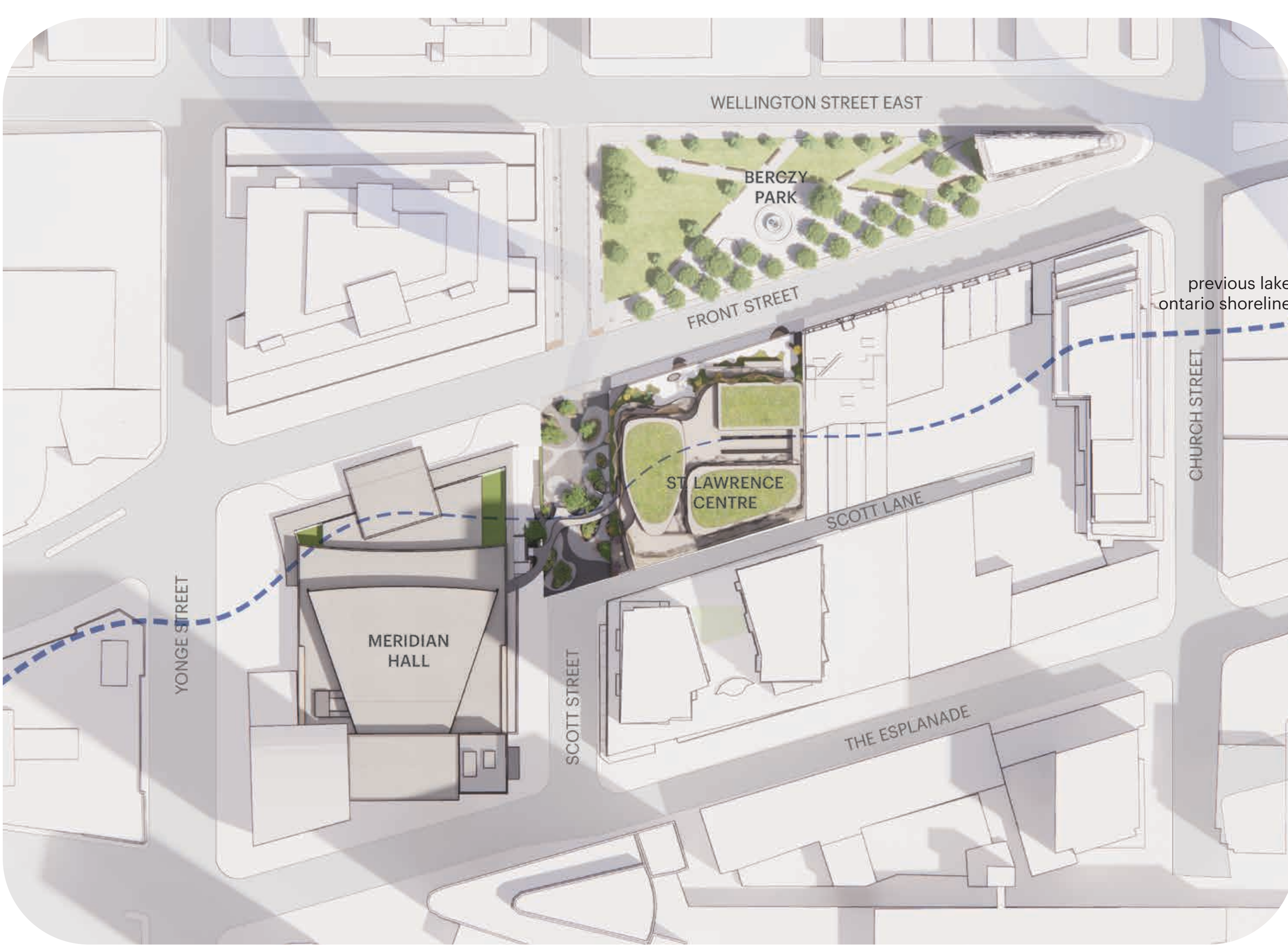
Shaped by water  
St. Lawrence Centre for the Arts will achieve radical inclusivity in a contemporary performing arts centre. Toronto and

our visitors know this space belongs to us because we see ourselves represented here in all our glorious diversity, where our differences and similarities can shine. No matter our calling, there's a level of audience or performer participation that welcomes us.

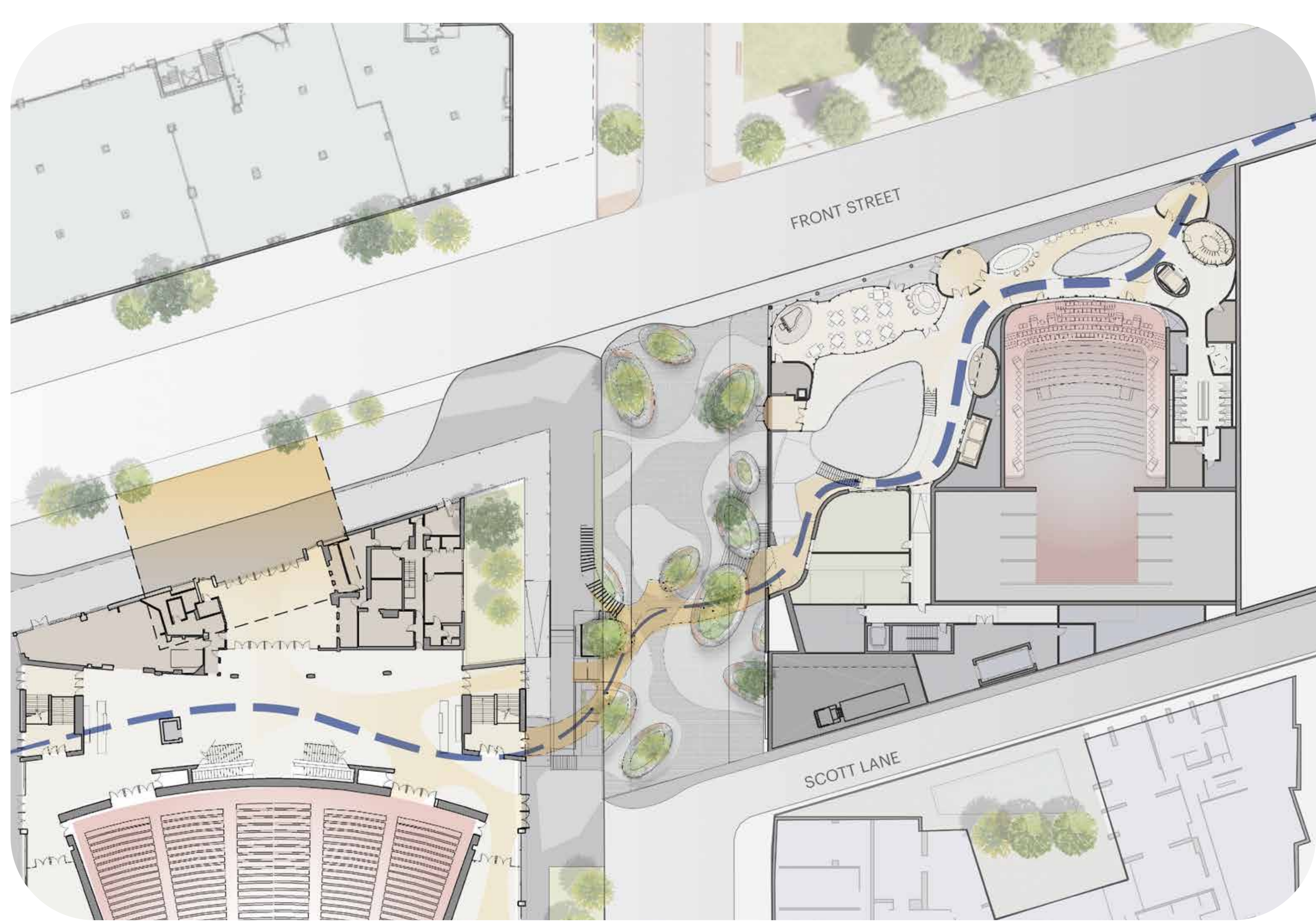
The architecture of the space supports these goals because it references natural and regional inspirations that have worked well here for millennia.



previous lake ontario shoreline



context plan 1:1000



site plan 1:400

*"recalling the imagined lake edge"*



Section-B 1:200

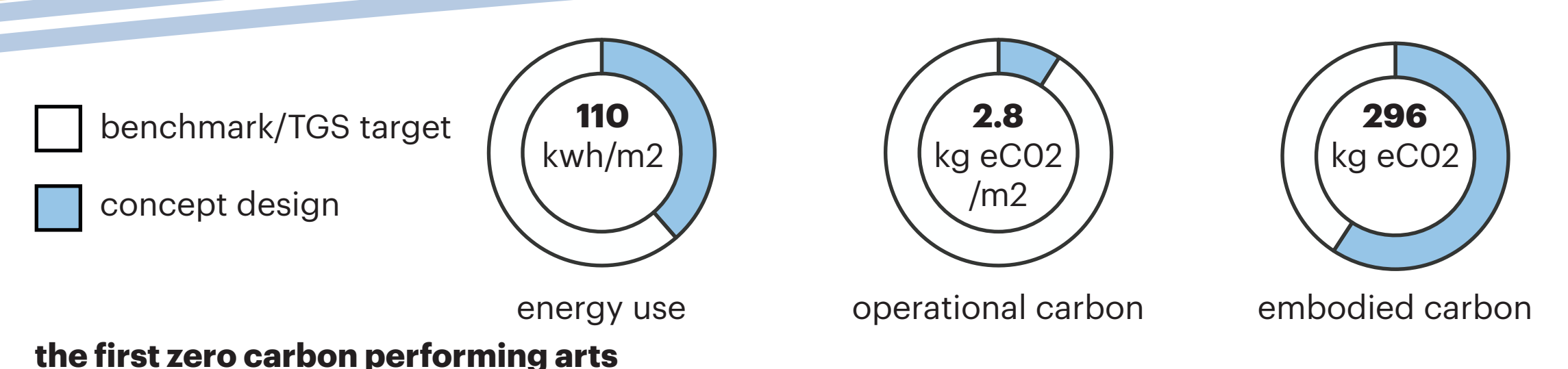




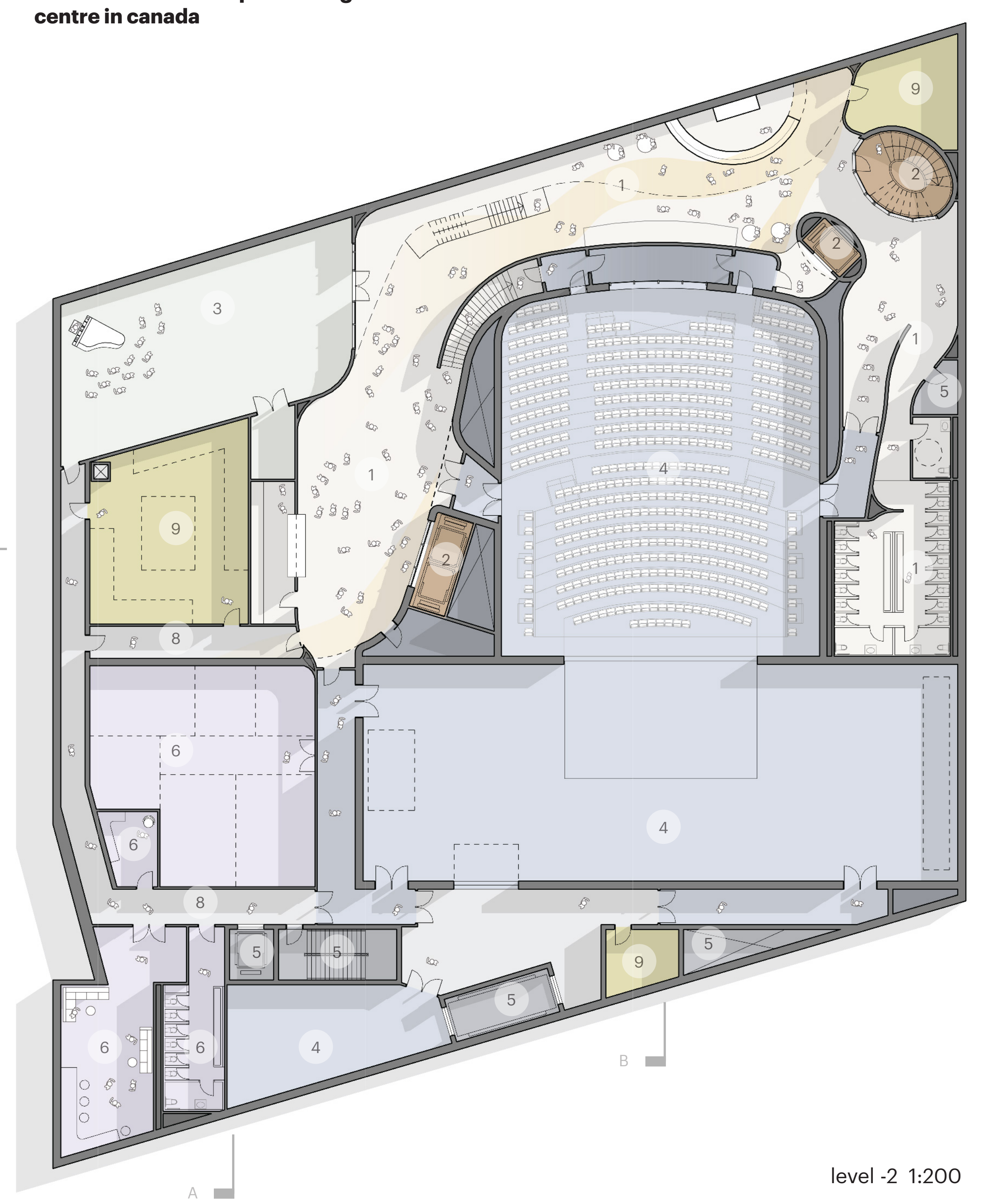
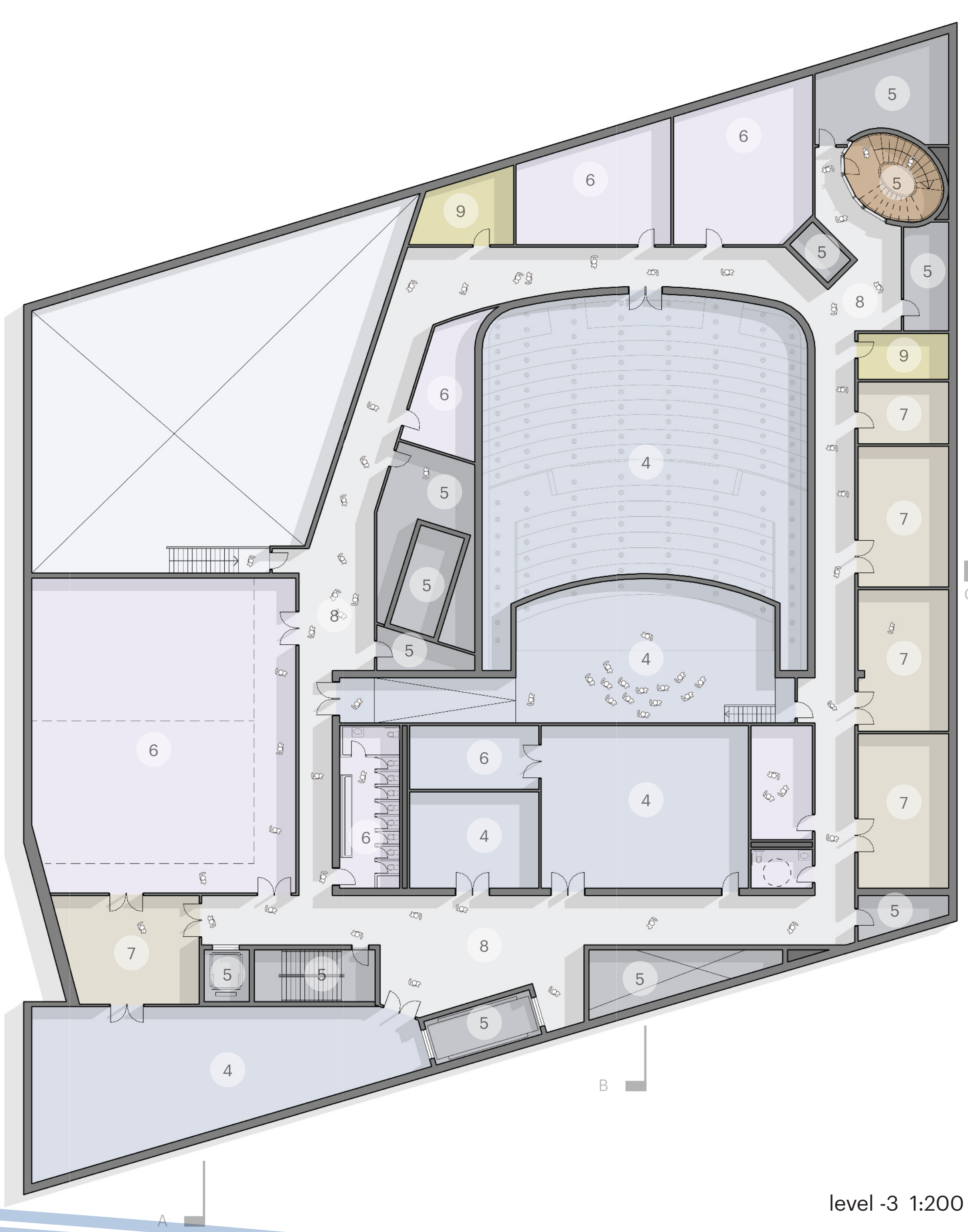
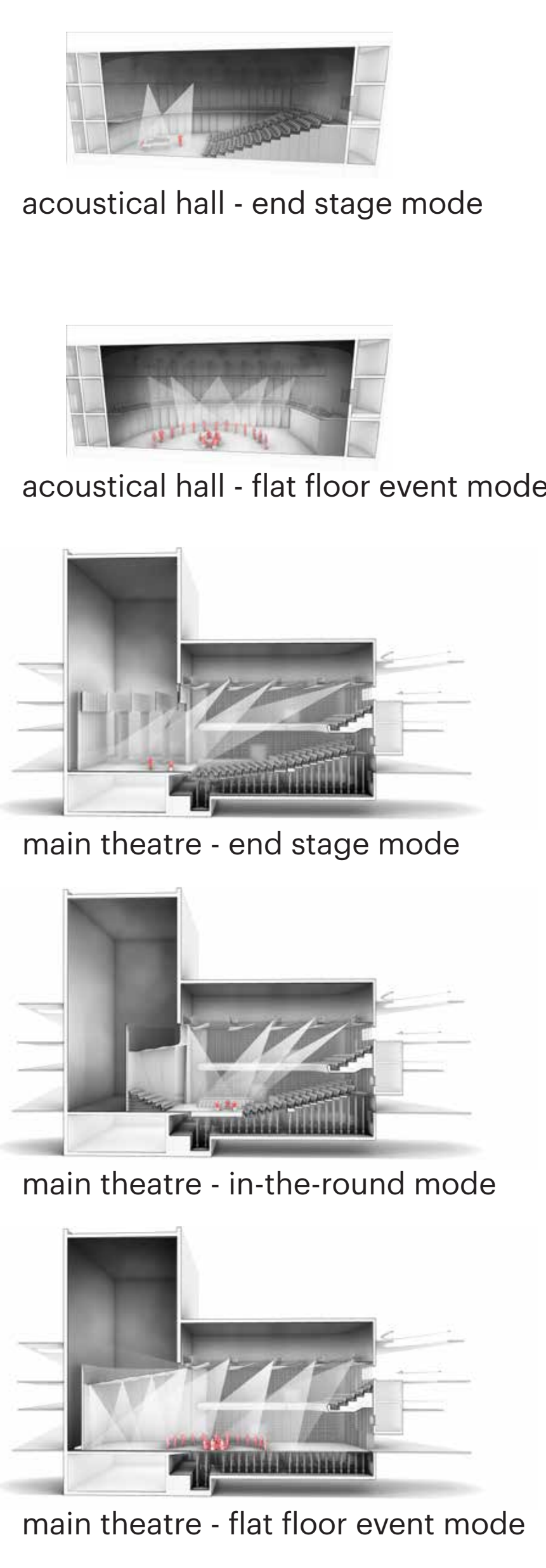
above berczy park looking southwest

*“clouds are water connected to sky”*

*“Tkaronto - the place in the water where the trees stand”*



**the first zero carbon performing arts centre in canada**

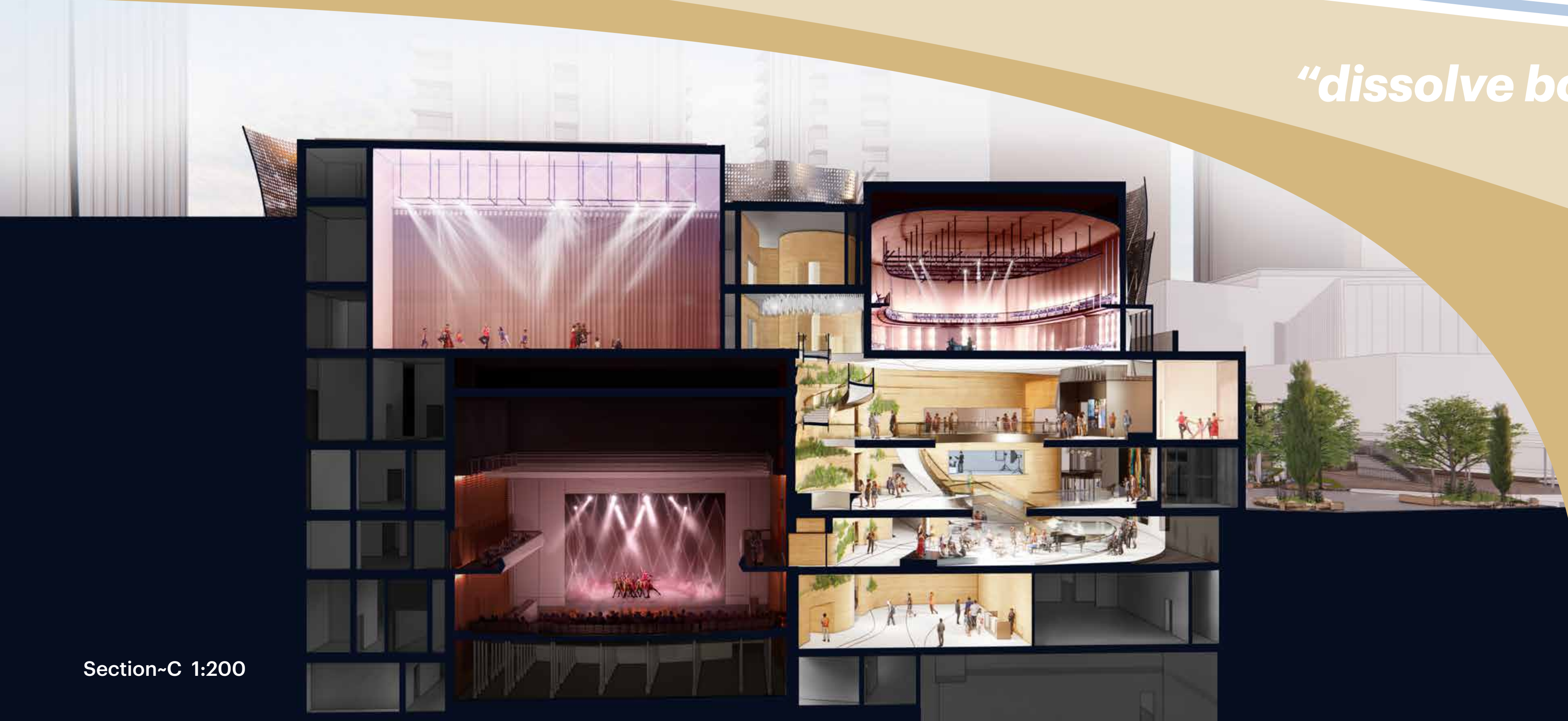


*“dissolve boundaries”*

- floor plans legend**
- |                                 |                          |                                  |
|---------------------------------|--------------------------|----------------------------------|
| 1. FOH Public Space             | 6. BOH Personnel         | 12. Artists-in-Residence Studios |
| 2. FOH Entry and Elevators      | 7. BOH Technical Support | 13. Child Minding                |
| 3. Rehearsal/Multipurpose Rooms | 8. BOH Circulation       | 14. Terrace                      |
| 4. Main Theatre Stage           | 9. FOH Support           | 15. Acoustic Hall                |
| 5. Building Services            | 10. Media Studio         |                                  |
|                                 | 11. Administration       |                                  |

*“water is life”*

*“nibi ~ I am coming toward you”*



Section-C 1:200





*"easily reconfigured"*

acoustical hall - in the round mode



heritage  
celebrating 20th century heritage in the  
context of millenia



interconnectedness



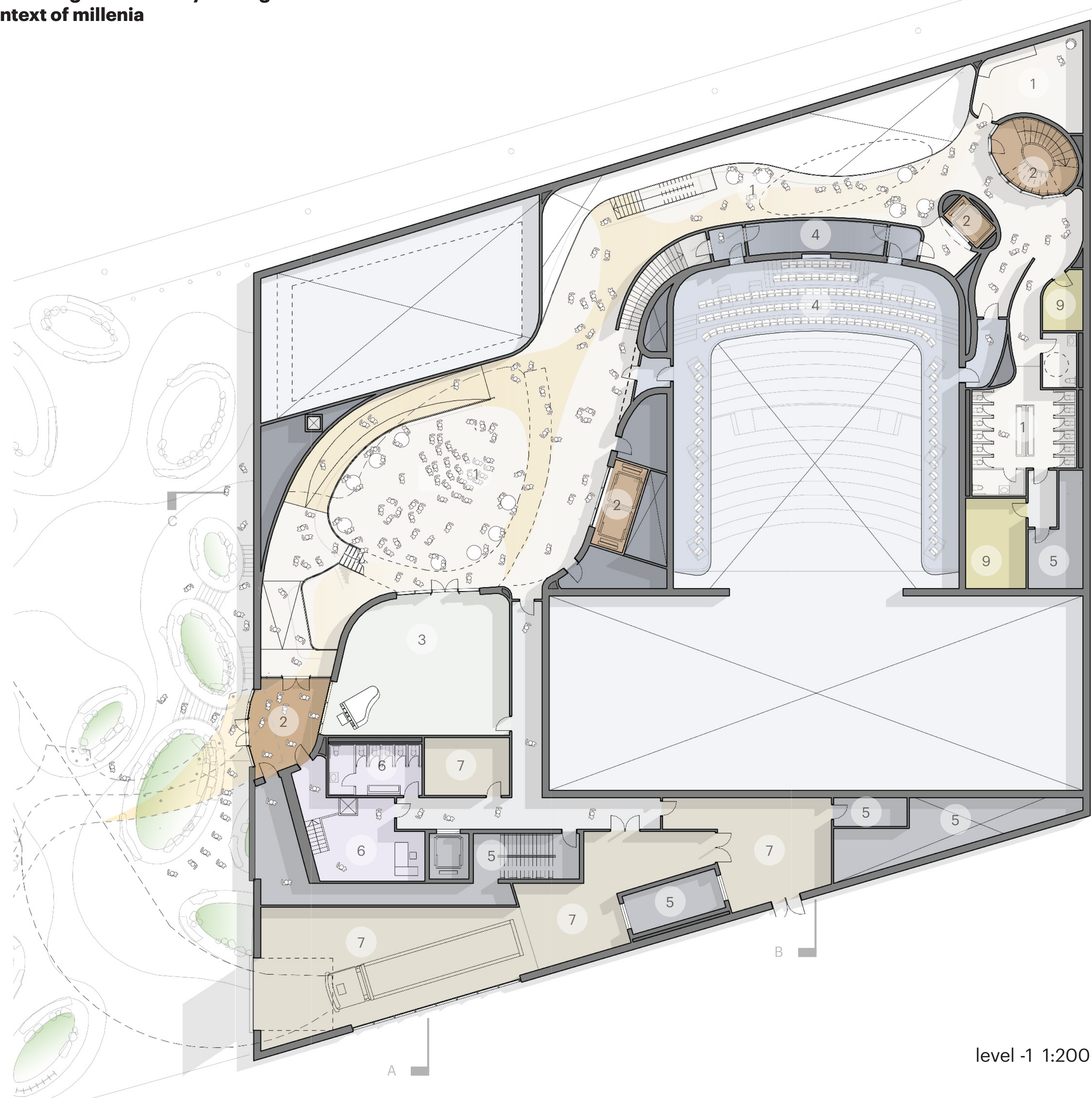
shoreline



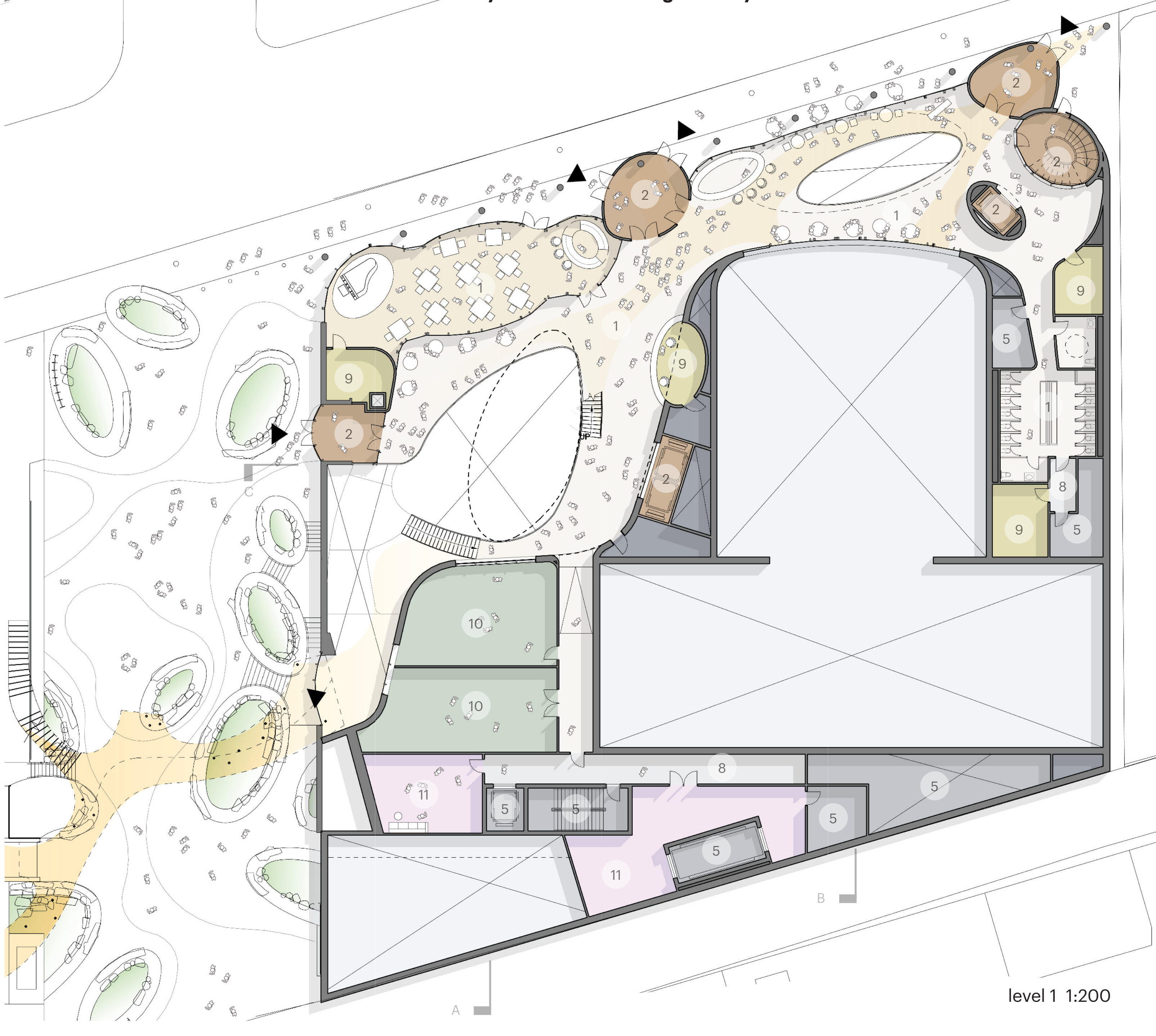
entrances level 1  
radical accessibility - warm & welcoming for everyone



public services



level -1 1:200



level 1 1:200



front street looking southwest



level 1 front street lobby



level -2 lobby





scott street lobby

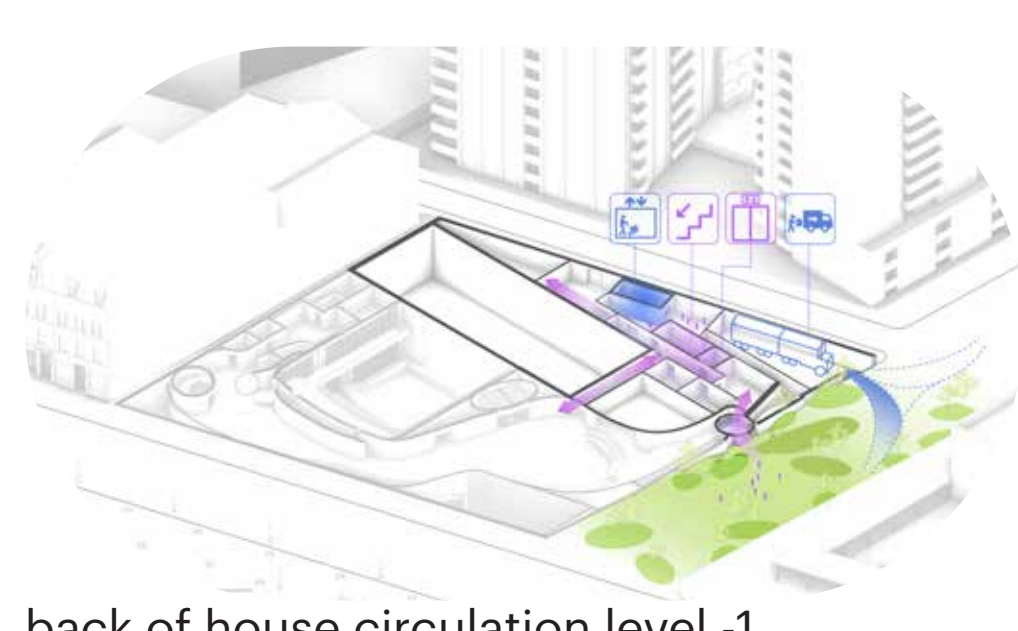
*“shoreline is a place of exchange from land to water”*



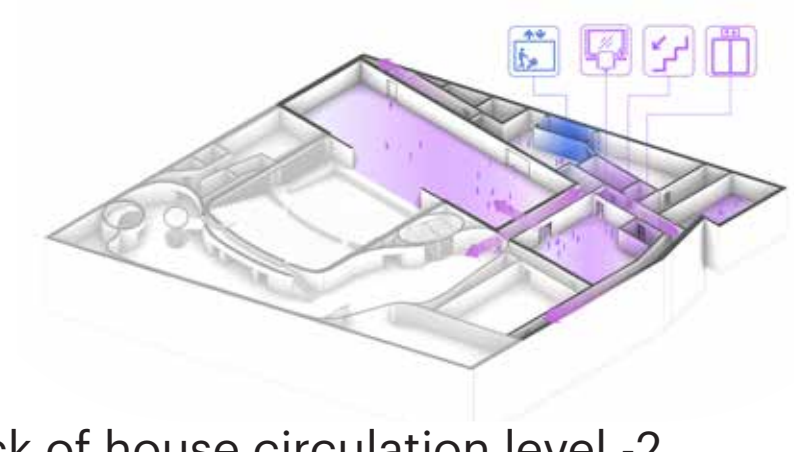
informal performance  
celebrate interconnectedness - the building is alive



connection to landscape



back of house circulation level -1



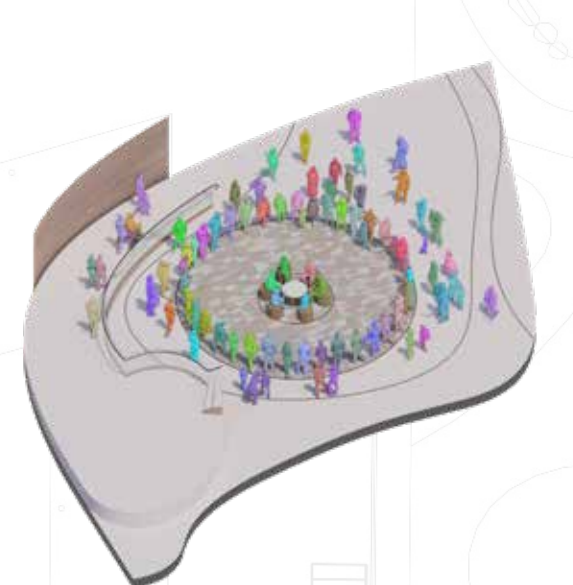
back of house circulation level -2  
artist connectivity on all levels - smooth loading operations



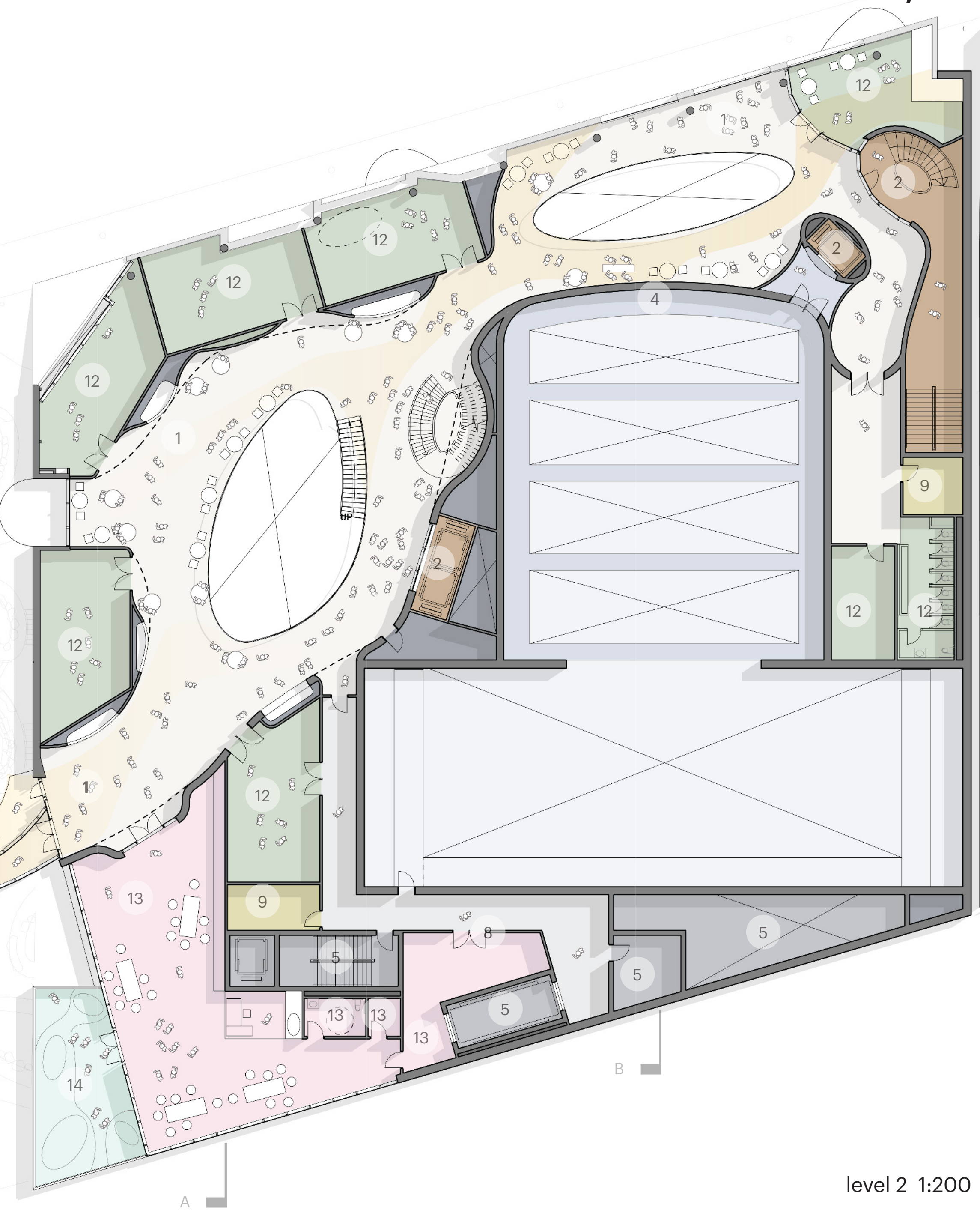
back of house circulation level 3



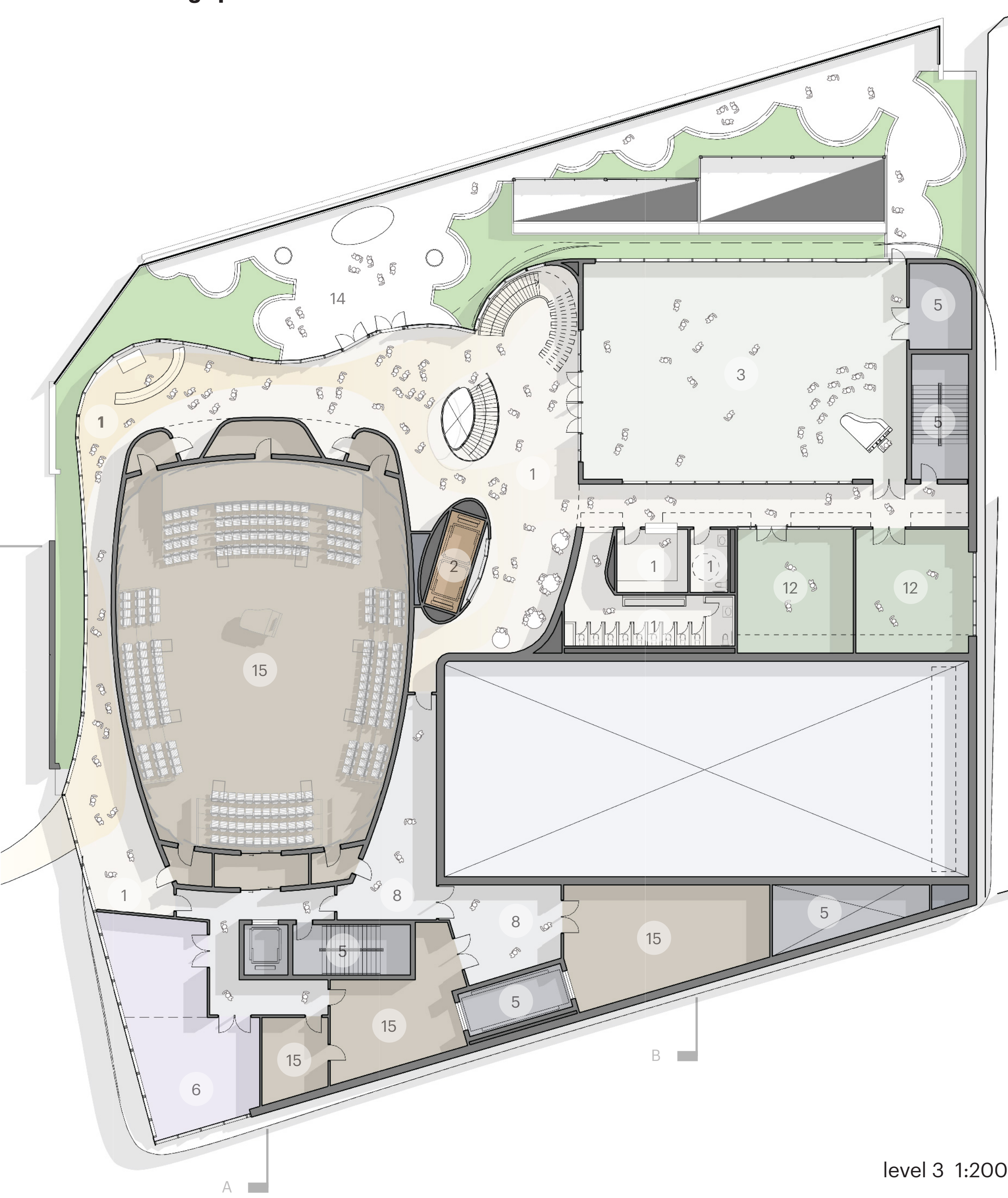
artists-in-residence studios connection to lobby



scott street lobby - gathering mode

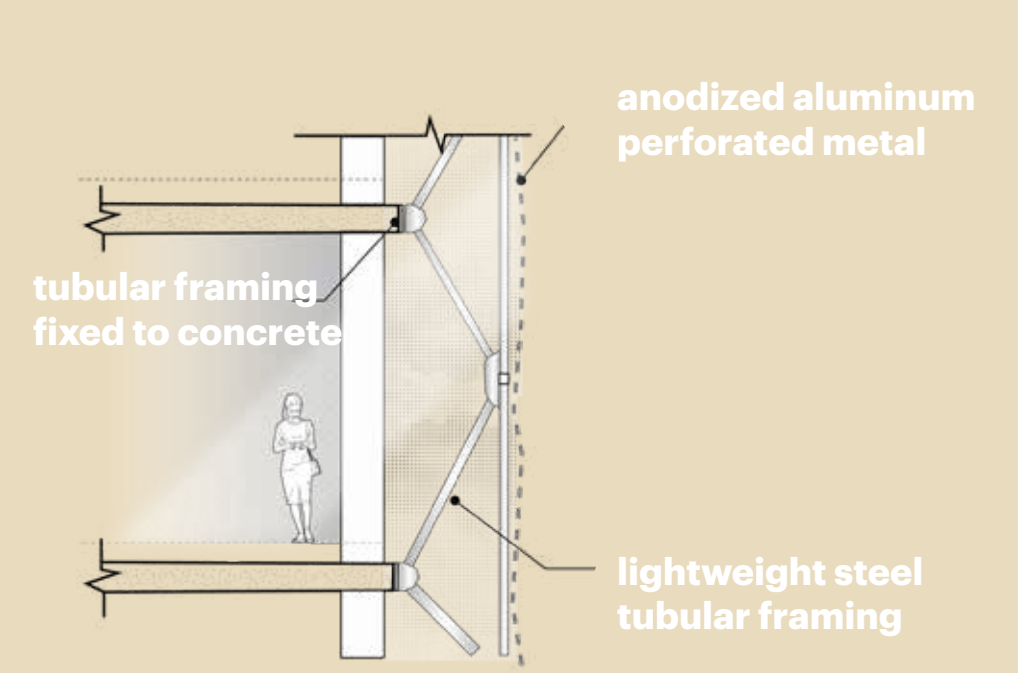


level 2 1:200



level 3 1:200

- elevations legend
- A. bronze anodized aluminum perforated metal
  - B. clear anodized aluminum perforated metal
  - C. painted aluminum perforated metal (RAL Coating)
  - D. concrete precast panel
  - E. curtain wall (triple glazed, bird friendly)
  - F. bronze anodized aluminum panels
  - G. stainless steel door



structural section - through cloud



north elevation 1:200





level 3 terrace

“fully inclusive performance”

“glorious skyline views”



main stage theatre - end stage mode



main stage theatre - event mode



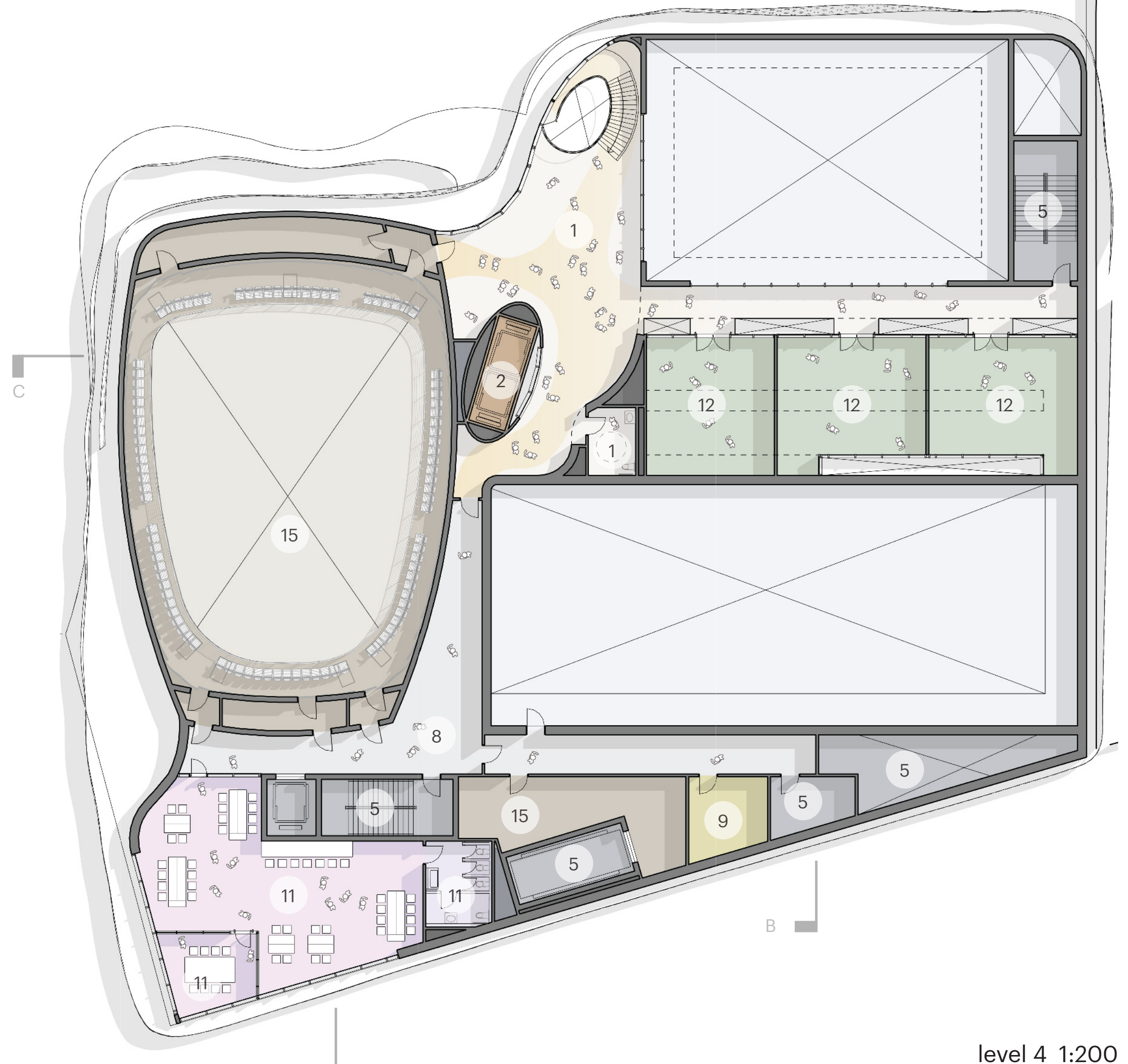
acoustical hall - event mode



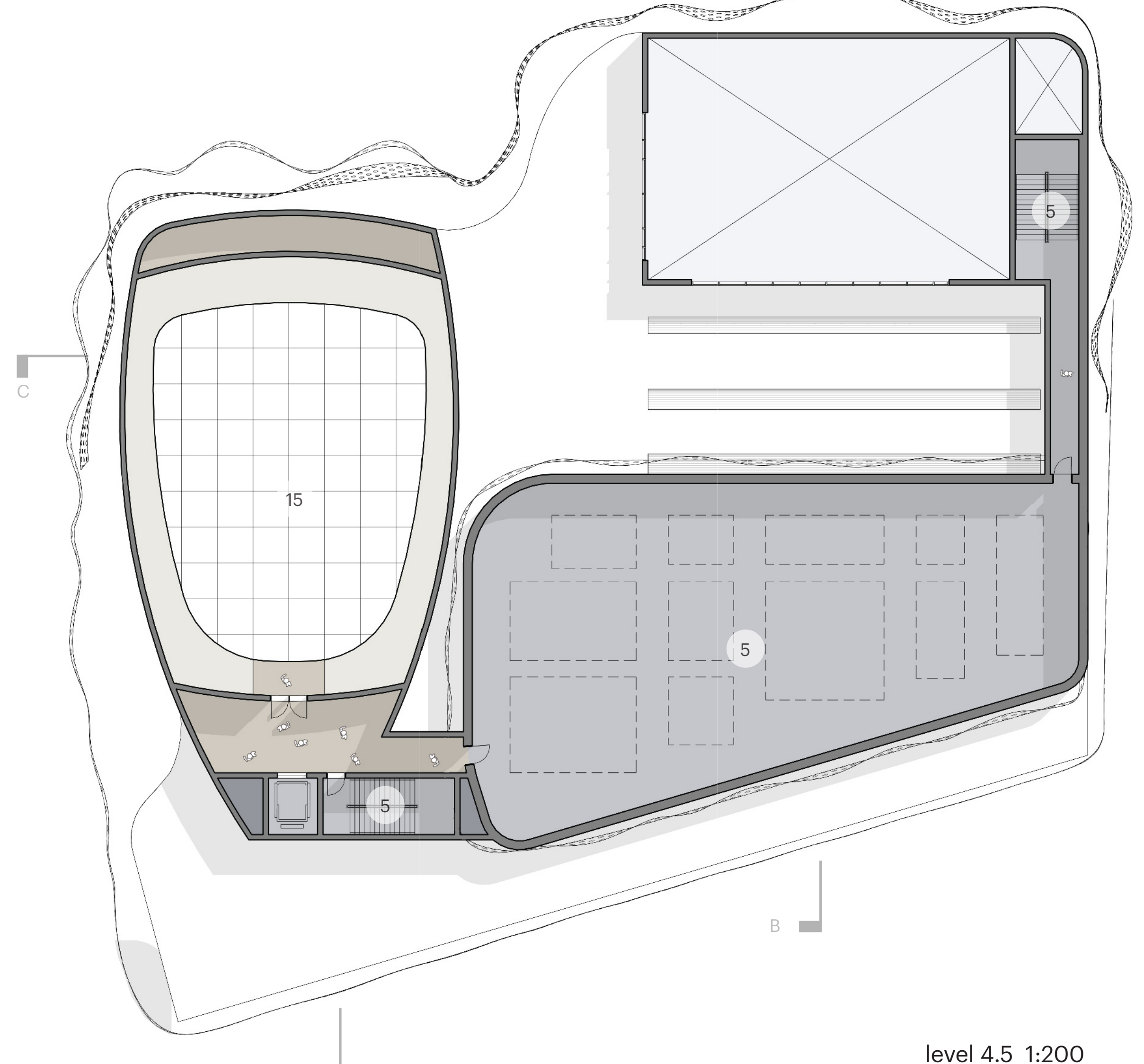
restaurant connection to street & lobby



child minding connection to outdoor terrace



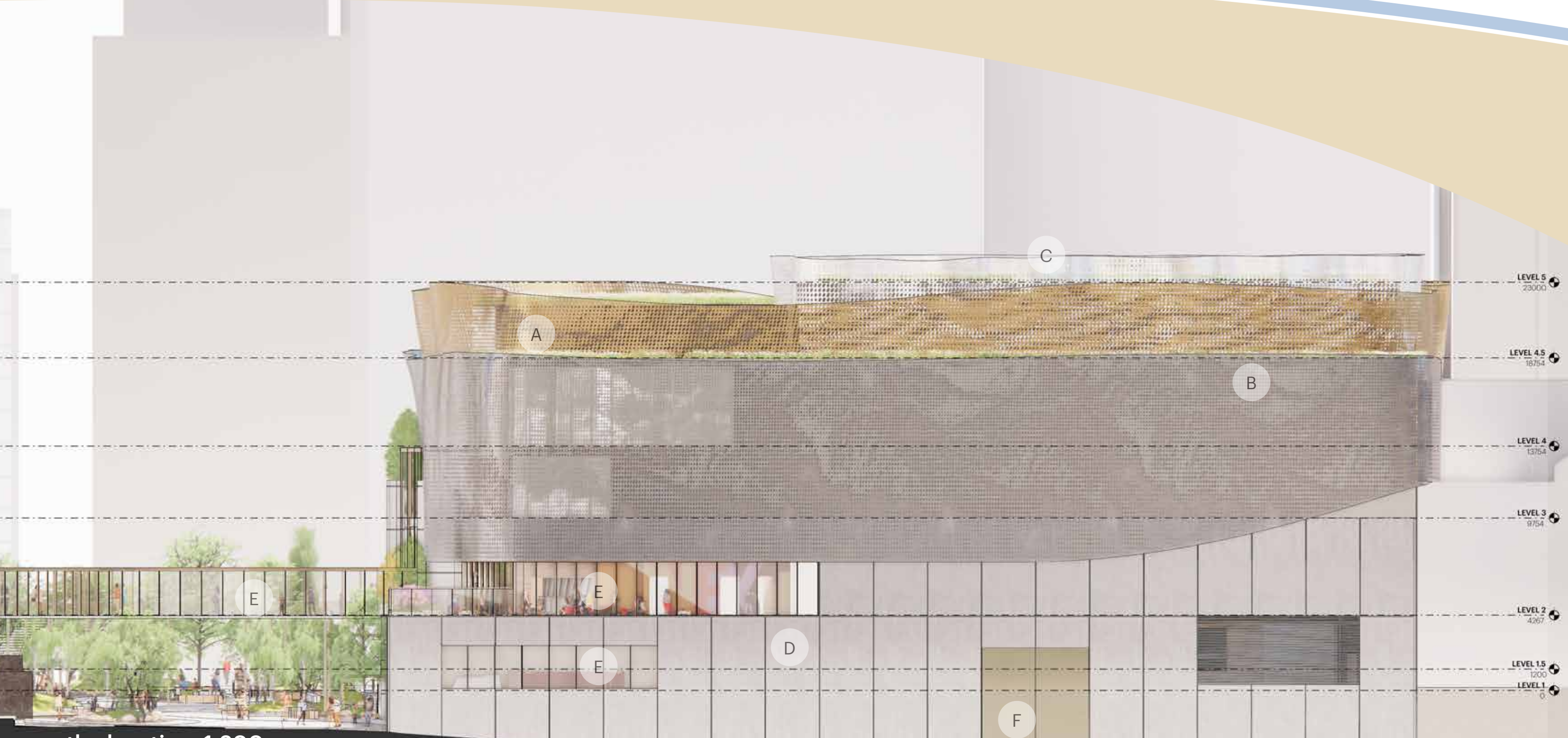
level 4 1:200



level 4.5 1:200



west elevation 1:200



south elevation 1:200